

User Manual



● Radio Clock Camera Operational Manual

Radio instructions

1. Connect to the power, touch the “POWER” button to turn the radio on, and tap again to turn off the radio.
2. Long press the “M” button to automatically search the channel and save the channel. Up to 20 radio channels can be stored.
3. After the automatic search is completed, touch the “M” button to play the saved channel continuously. At this time, touch the “TUNING” button to play the previous channel or the next channel.
4. When the radio is playing a certain channel, touch the “TUNING” button gently to adjust a frequency unit of the channel. Long press will automatically search and play a channel.

Bluetooth speaker instructions

1. Turn on the power and touch the “POWER” button, then touch the “BT/FM” button to select Bluetooth playback.
2. “BT” icon flashes on the display, turn on the Bluetooth switch of the mobile phone or other electronic device and search for “KT-V100” to connect with the device. “BT” icon will be always on when connection is successful.
3. Tap the “M” button to play or pause the music.
4. The “VOL.+/-” button adjusts the volume, and TUNING can choose to play the previous or next track.

The clock and alarm settings

1. In the state of the clock display, (with the radio and Bluetooth speakers turned off), long press the “M” icon, the “24H” on the screen will start to flash.
Touch “-VOL/SET+” button to select 12H or 24H version; touch “M” again to set clock, alarm clock, and alarm clock sound types separately. Press “ENTER” to complete setting anytime.
2. After setting alarm clock time, the alarm clock icon will be illuminated.
When the alarm rings, touch any button except the “SNOOZE” to stop the alarm.
Touch the “SNOOZE” button to pause for a few minutes and then ring again, repeat twice.
Long press the “SNOOZE” button to turn off the alarm.
3. The battery at the bottom of the machine is for saving clock, radio channel information in case of AC power off.

Long press the “POWER” button to turn on/Off Camera (default is on)

Quality Assurance: 1-Year Warranty

Notice: Connect the power supply and the camera start up automatically. then set up your camera by your phone or tablet device.

● Quick Guide For APP Installation

For iOS Devices:

- a. Scan QR Code for iOS operating system to download and install “Yoosee” APP with iPhone or iPad devices.
- b. Search “Yoosee” in App Store with your iOS devices, download and install APP.
- c. Input www.yoosee.co on PC web browser for iOS or Android devices QR code, download and install APP.

For Android Devices:

- a. Scan QR Code for Android operating system to download and install “Yoosee” APP with Mobile or tablet devices.
- b. Search “Yoosee” in Google Play with your iOS devices, download and install APP.
- c. Input www.yoosee.co on PC web browser for iOS or Android devices QR code, download and install APP.



iOS Device QR Code



Android Device QR Code

1. Account Registration & Login:

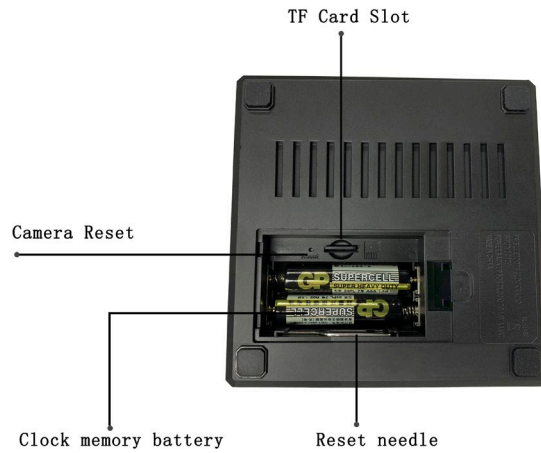
- a. Click “Yoosee” App and “Quick register” for an account for new users.
- b. Input mobile phone or email address for registration and set account password as APP prompt.

**** Mobile phone number registration is available only in certain countries.**

- c. Login with registered account to start camera device pairing or viewing. Login is also available with WeChat or Line account.

2. Adding New Camera Device:

Power camera device and follow prompts as APP indication. If beeping sound or voice prompt is not heard from camera device, please press and hold the reset button for camera device for 5 to 10 seconds to activate rebooting for device to factory default settings. (Pan & Tilt IP Camera reset button is located at back bottom or base, Bullet or Dome models reset button is located at cable end area)

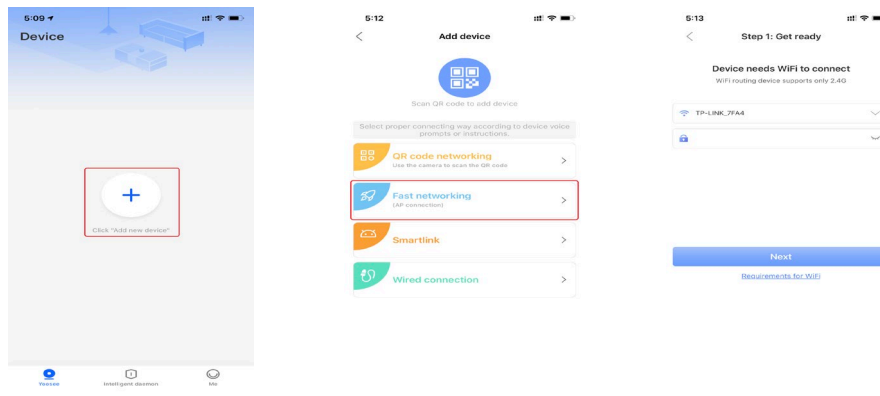


3. Pairing Camera Device to Wifi Router:

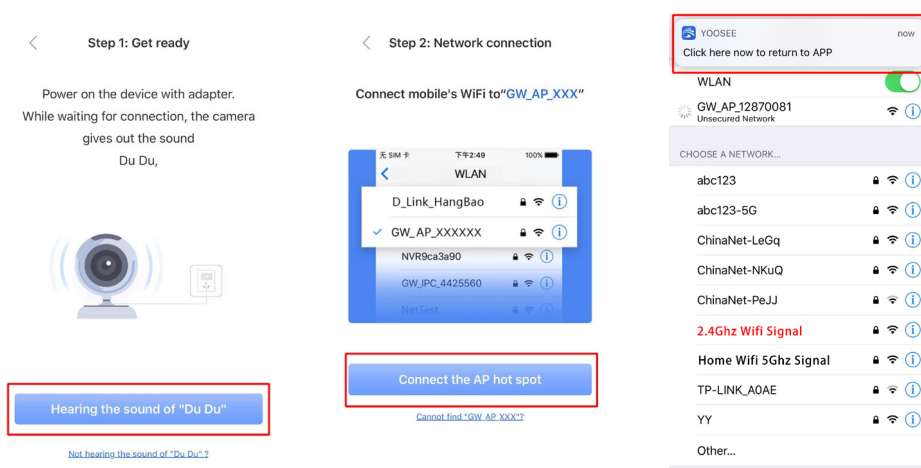
- Connect mobile device to Wifi router signal. (Ensure mobile is connected to 2.4Ghz Wifi signal as camera device does not support 5Ghz wifi signal currently.)
- Start "Yoosee" APP, click "+" icon on top right corner or center of APP interface, Click "Add new device" and select "Fast Networking" (For camera device that supports AP connection) or Smartlink (For camera device that supports sound wave connection) to start pairing installation.

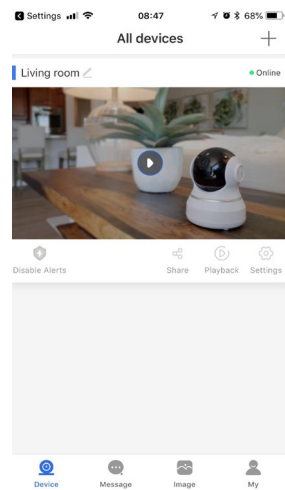
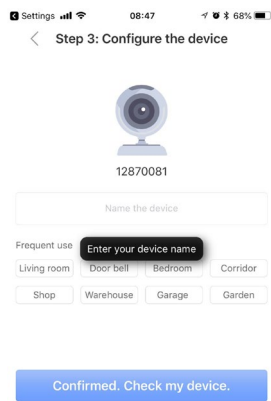
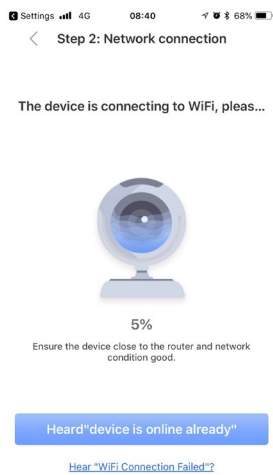
**** APP interface might vary from APP version or Devices Operating System.**

**** For old version camera devices or firmware, please use Smartlink to pair to Wifi Router.**



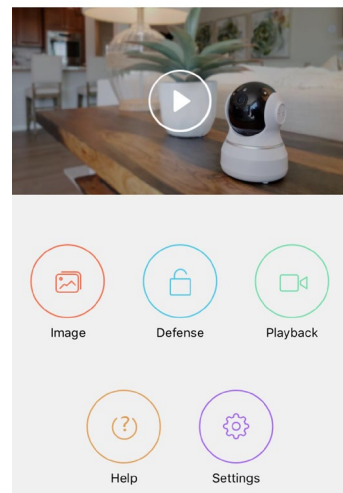
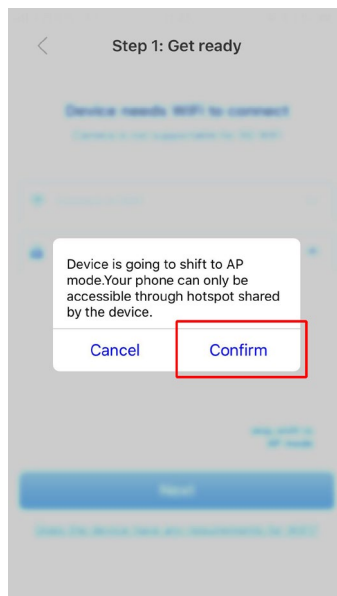
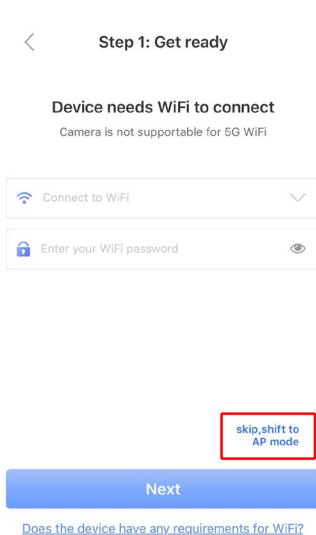
- Click "Hear a beep for connection" when beeping sound or sound prompt is heard from camera device. Click "Connect the AP hotspot" for next APP interface. Select the hotspot at the interface from our product corresponding hotspot (generally GW IPC XXXXXXXX, "XXXXXXX" refers to camera device ID number) to connect and proceed to complete all steps as APP prompts to complete camera device pairing installation procedures.





4. Using Camera Device with AP Standalone Mode:

1. Press and hold the reset button for camera device for 5 to 10 seconds to activate rebooting for device to factory default settings.
2. Wait for 5 minutes after camera device is restored to factory default settings. Press and hold reset button till sound prompt is heard.
3. Go to network settings for mobile or tablets device and select GW_AP_XXXXX (generally XXXXX refers to camera ID number).
4. Open “Yoosee” APP and select “**skip,shift to AP mode**”. Select “Confirm” and shift to AP Standalone mode for camera device.



5. Understanding Yoosee APP:

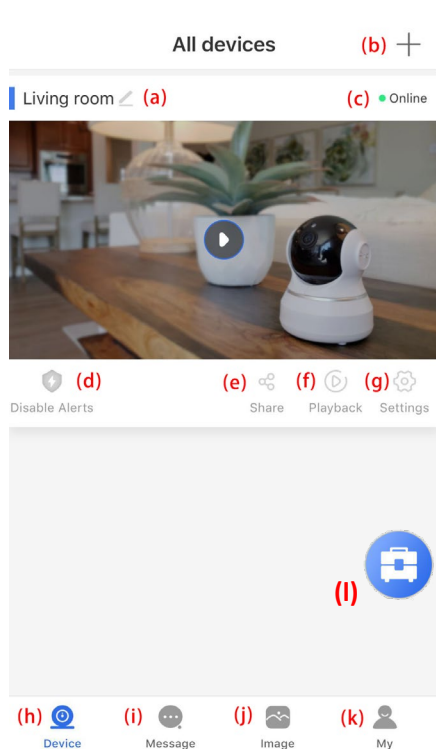


Diagram 1.

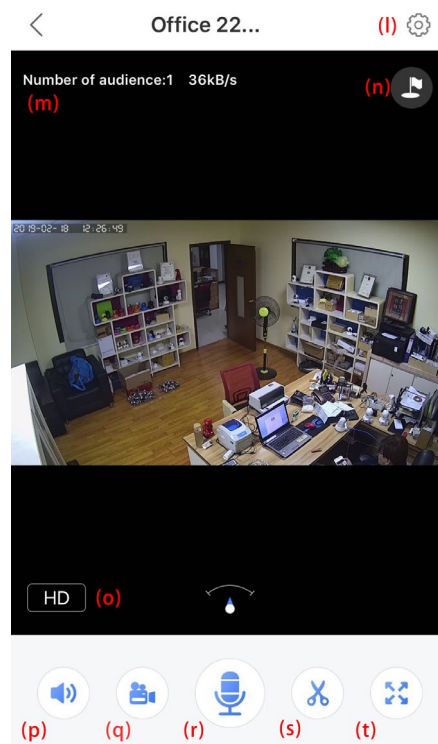


Diagram 2

Diagram 1:

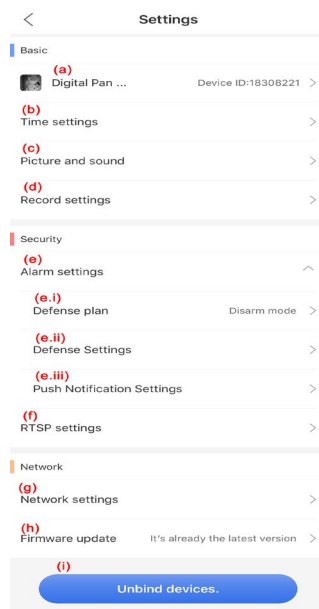
- a. Camera device name. Click on icon to change device name.
- b. Add new camera device to APP.
- c. Camera status (Online or Offline).
- d. Arm (On Guard) or disarm (Disable Alerts) for camera device.
- e. Share camera device to other users.
- f. Playback video clips for camera device.
- g. Camera device settings and features.
- h. Camera main interface (display all added camera devices).
- i. Display all alarm alerts messages.
- j. Snapshots of camera devices.
- k. APP account information and details.
- l. One key arm or disarm for all camera devices within APP.

****Available only for new version camera model. Ensure Firmware and APP version is upgrade to latest version. If feature is not available, please select "My" icon on right bottom on APP interface, click "General settings" and turn on "Quick set alert mode". Feature is made available for 2 or more camera devices.**

Diagram 2:

- m. Camera device settings & features.
- n. Display number of users view camera and connection bandwidth
- o. Set Preset View Position options. (Available for Pan & Tilt Models with Preset View option).
- p. View resolution option. LD (Lowest Resolution), SD (Standard), HD (High Resolution).
- q. Mute or disable mute feature for camera device
- r. Video recording to mobile phone option.
- s. Voice intercom feature. (Single or Duplex defers to camera processing chipset).
- t. Click to capture snapshot view of camera device.
- u. Enlarge camera device view

6. Camera Device Settings & Features:

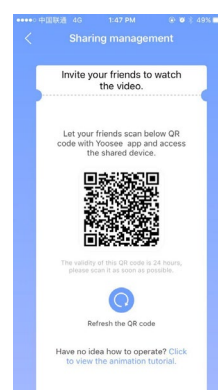
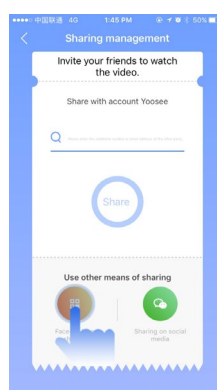
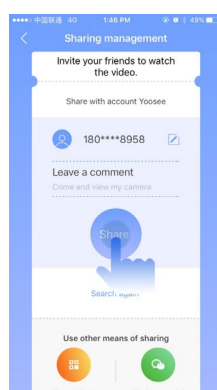
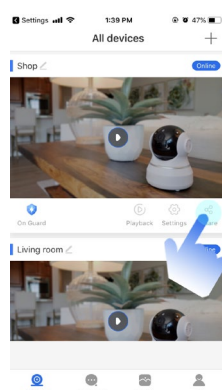


- a. Camera device information.
- b. Set time zone and time for camera device.
- c. Adjust picture resolution and volume for camera device.
- d. Recording settings for camera device. (Micro SD Card is inserted and made available)
- e. Alarm settings for camera device. (Receive Alarm prompt, Alarm Buzzer, Motion Detection & RF 433 MHz Sensors).
 - e.i : Camera Arm and Disarm Time;
 - e.ii : Motion Detection On/Off and adjustment to Motion Sensitivity control.
 - e.iii : Alarm notifications, alarm interval and alarm buzzer settings.
- f. RSTP settings and RSTP password option.
- g. Networking settings for camera device. Switch to Wifi or Ethernet option.
- h. Check camera device firmware updates
- i. Unbind devices (To switch camera device location or pair to new Wifi router).

7. Sharing Camera Device:

Due to higher security for camera devices, Yoosee camera devices are made to recognize only one account. To add camera device to other users, camera can only be shared and managed via:

- a. Mobile number or email
- b. Sharing or QR code or link via social media (WeChat or Line)
- c. Scanning of QR code.



Method a

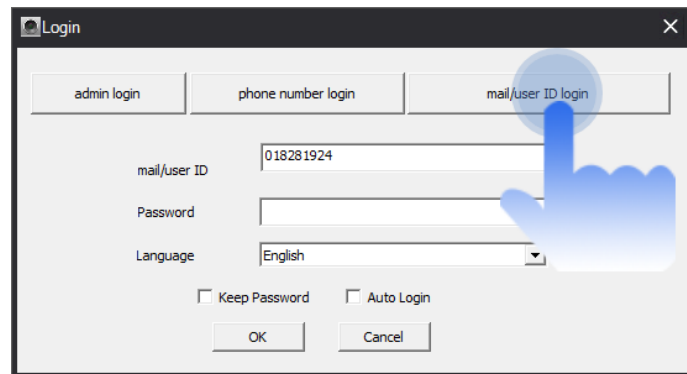
Method b

Method c

8. CMS Client Software for PC (Windows Operated System):

Input www.yoosee.co on your computer browser. Select CMS Client icon to download software for PC (Windows Operated System). Login with below options:

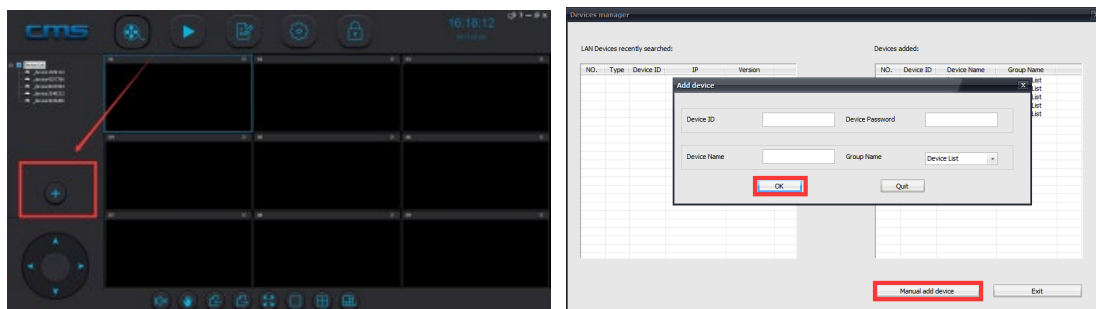
- Admin login (LAN enviroment with blank password)
- Mobile number login (ensure mobile number is registered with account)
- Email or Yoosee account number (Yoosee account number can be found in "Account information" at "My" icon.



CMS software will automatically search for available device in LAN or same WLAN networks enviroment. Dialog box will pop-up if any devices are found, click "Add all" devices and add them to device list.

Add Camera Device Manually:

Click "+" on CMS left interface, select "Manual add device", input device name, device ID and password and click OK to complete adding process.



Monitoring with CMS:

Open CMS software, right click on Device List and select "all connect" option in CMS menu or select an added device in device list and right click to start monitoring.



9. Related Parameters.

Resolution Ratio	Real 1080P
Video Format	AVI
Frame Number	30
Visual Angle	90 degree
Motion Detection Camera Shooting	Straight line 6 meters
Minimal Illumination	1LUX
Compressed Format	H.264
Night Version	4~6M
Consumption	12V/1A
Storage Temperature	-20-80 degree centigrade
Operating Temperature	-10-60 degree centigrade
Operation Humidity	15-85%RH
Memory Card Type	TF card
Player Software	Mainstream player
Computer Operating System	Windows/Mac OS X
Mobile Phone Operating System	Android/iOS
Web browser IE7 and above,chrome,firefox safari.etc	

10. Frequently asked questions:

① Device indicated offline status on APP device list

Ensure camera is connected to Wifi and has access to intranet. Please check if Wifi router has internet access and indicator light is functional.

② When the APP of mobile phone cannot receive Alarm push notification.

Ensure Alarm (Motion Detection or Sensors are available) and Alarm Push notification is activated. Arm camera device at APP device main interface (icon indicates On Guard status. Check mobile device if notification is forbidden.

③ Motion Detection false alarm notification is high.

Adjust motion detection sensitivity option under Alarm settings. If option is unavailable, please update APP version and camera device Firmware.

④ Recording or video file is unavailable. .

Ensure Micro SD card is formatted to FAT32. Please also check if Micro SD card is damaged. **Micro SD card capacity above 64GB, please use C10 (Class 10) card.

⑤ Camera device cannot connect to WiFi.

- a. Check if Wifi signal is 2.4Ghz bandwidth as camera device does not support 5Ghz Network currently. Please ensure Wifi password is correct and as requested format as per APP indicated.
- b. Ensure Wifi router does not limit Wifi access such as AP isolation, limit number of devices for internet use, anti-free loading etc...
- c. Some mobile phone version requires location services for Wifi list.

⑥ AP hotspot or Camera device ID is not indicated in Wifi list.

- a. Ensure camera device support AP (Camera supporting sound wave Smartlink does not support AP hotspot or Fast Networking option).
- b. Mobile phone and camera device is too far apart. Please shift distance within 10 meters.

11. RSTP Password:

For further enhance safety for camera device (iOS 4.3 & Android 34 version above), Please set RSTP password as indicated with APP. You can switch off or set RSTP option via APP if required.

RSTP password is used for recording devices or software like NVR, CMS Client, Onvif protocol purposes to enhance better security and privacy.

12. Regulatory Compliance Information:

The camera device complies with rules of the CE, FCC and Quality Management 14 Rules as well as PDCA (Plan, Do, Check and Act). The equipment generates and can radiate radio-frequency or Wifi energy. Please use and install equipment in strict accordance. The equipment has been tested and found to comply with CE & FCC rules. These specifications are designed to provide reasonable protection against such interference, however, there is no guarantee that interference will not occur.