



Recorder Instruction Manual

Please read the manual before using it.

Declarations:

First, thanks for using our company's digital products!

Please read the instructions carefully before using the product to ensure using it correctly.

For better service, the contents of the manual may be changed because of the modifications of the performance and functions of the product, for which, we will not further notice.

If the practical settings and application method are not in accordance with this manual, please view our website and refer to the newest product information.

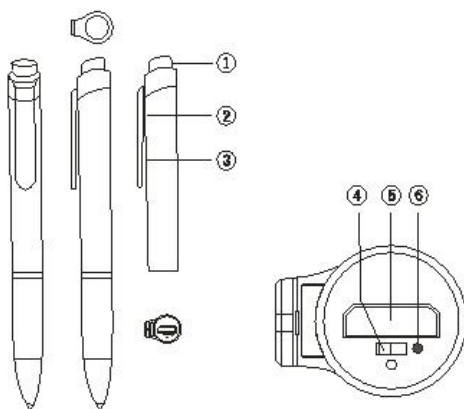
Attentions:

- 1、 Please don't attempt to dismantle、 restore or refit the product.
- 2、 Please don't use the product where electronic products are prohibited to use (Airplane, etc.)
- 3、 Please don't put the product or its accessories into mouth.
- 4、 Please don't put the product in water or other liquid.
- 5、 Please don't use this product in extremely cold、 hot、 drippy or dusty environment.

Warnings:

- 1、 Please don't drop down the product or its accessories in case of breakdown.
- 2、 Please don't expose the product under hard light or heat source to prolong the life time of the product.
- 3、 Please charge the battery fully if it will not be used for a long time.
- 4、 Please don't pull out、 move hard from side to side the connected accessories.
- 5、 Please attention that the company takes no responsibility for the damages and compensations caused by using the product.
- 6、 The company takes no responsibility for the data or material loss caused by using or repairing the product. So, please backup by yourselves if you store vital data in it.
- 7、 Please attention that this product is prohibited to be used in illegal way. For example: other's privacy or intercept, etc.

Operation Instructions



- (1) 录音键 (2) 挂钩 (3) 操作指示灯
(4) **OFF** (电源关) (5) USB 接口 / 线控器接口 (6) **ON** (电源开)

一. Turn on/off:

When the power switch is turned to the “ • ” means “**ON**” position, the machine will start automatically, Turn off when dial “**OFF**” in reverse direction.

二. Recording:

1. Start the machine and enter the recording automatically (Disconnected Controller) The Red and blue indicator light is always on, Change the red or blue light indicator after initializing the blue light indicator (Routine recording instruction: Red Light goes out three times, Voice Recording instruction: The Blue Light flashed three times and went out), This is when the recording begins (Recording in progress)。
2. Power switch to the “OFF” position, the recording to save and shutdown, At the same time, The red light indicates to turn blue. The red light indicates to flash twice。
3. Can record up to 999 files, Please clean the folder regularly。

三. Voice-activated recording:

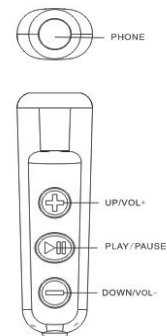
1. Turn on the voice switch before recording (Push it to “ON”) This is a voice-activated recording (Lantern's instructions), Otherwise, it's standard operating procedure (Red Light)。
2. Voice control recording means that the machine will automatically open and close the recording according to the surrounding sound source detection。

四. PLAY (Recording/music PLAY)

Access the line controller in any boot state to automatically switch to play state, The Blue Light flashes during playback, The Blue Light is always on when play is paused。

五. Line control operation

The current voice, or music file, is automatically played when the wired player is plugged into the boot state. Play time by pressing the “PLAY” button for voice mode, and music mode conversion (At this point the red light will indicate once). Play Short Press “PLAY” to pause play, Press again short to continue. Press “VOL+” key to enter the previous song selection, Short press the “VOL-” key to go to the next selection, Long press “VOL+” key to enter volume increase adjustment, Long press the “VOL-” button to enter the volume reduction adjustment, Hold down “VOL+” to enter the delete menu, Press “VOL-” to cancel.



六. Time/date modification

1. Tool modification time : Connect the machine to PC USB via a dedicated data cable (Removable Disk drive characters are displayed on the computer), Open the time modification tool that comes with the removable disk on your computer, Click on the modify tool, When “set device time successfully” appears and then click “confirm”, the system time on the computer is automatically modified.



2. File time modification: The time and date can be modified from the “timeset” TXT file that comes with it. Here's how:

Connect the machine to your computer and find the “timeset” file on the removable disk to open, Press the picture to modify the date and time and press save to exit USB and then restart the machine to modify the local time.

Note: This function is used when the recording time is not accurate or when the machine is

not used for a long time.

七. Delete:

When playing (voice or music playing), briefly press the “PLAY” button to enter the play pause state (When we pause, the blue light stays on), Long press the “VOL+” button to enter the delete state (The Red and blue lights indicate), Then short press the “PLAY” button, the red and blue indicator light flashes quickly alternately until the blue light turns long, That means the deletion was successful (Only the currently played file can be deleted with each operation).

八. TXT document settings: (This function can only be operated on the computer)

Open the TXT document as shown below: (The parameters in figure are factory defaults)

BIT:6 //Bit Rate Setting, 0-192k,1-32k,2-64k,3-128k,4-192k,5-384k,6-512k,7-768k,8-1024k,9-1536k 0 is the WAV 1-4 is the mp3 5-9 is the wav
GAIN:5 //Recording sensitivity adjustment (1~7) The bigger the number, the louder the recording
PART:90 //Recording split setting (10~240Min) For example: 30
VOR:0 //Recording Voice Control Setting 0-OFF, 1-ON(Open the default threshold, the modification tool is adjustable), >1Voice Threshold 120-10 * Threshold,

1.BIT: To adjust the bit rate: Optional 0-9 bit rate setting, (0-192k, 1-32k, 2-64k, 3-128k, 4-192k, 5-384k, 6-512k, 7-768k, 8-1024k, 9-1536k, 0 and 5-9 are WAV. 1-4 is MP3 (The higher the sampling rate, the better the recording, The greater the power consumption) After “BIT:” .

2.GAIN: To adjust the recording sensitivity: Optional 1-7 recording sensitivity, The bigger the number, the louder the recording, It is normal for noise to be amplified at the same time as the recording distance. If your environment is particularly noisy (If there are around: Motor, roadside, market, fan) You can keep the numbers to a minimum, The closer the device is to the source, the less noise it makes, With low sensitivity, it's possible we can't record sounds over long distances, The amount of noise depends on the sensitivity and distance from the source and the ambient noise. After “GAIN:” .

3.PART: Set for audio segmentation: You can choose 10-240 minutes for segmented files. After “PART:” .

4.VOR: Setting for voice control sensitivity: Optional 1-5 sensitivity adjustment, The bigger the number, the more sensitive it is, The greater the number of sensitivity for the sound source is small, long-distance use of the scene, The smaller the number of the sensitivity is suitable for the sound source, close to the scene. After “VOR:” .

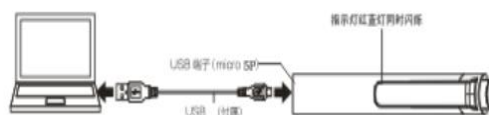
Note: After setting up the TXT document, be sure to choose to save, The document parameter is useless if you did not choose to save the set. TXT; The. TXT document settings folder can not be deleted.

九. Charging

Charging, The red indicator light is always on during charging, Turn the indicator light to blue when the battery is fully charged, When the machine is low, the red light interval until the battery consumption to a certain value after the automatic shutdown.

十. Removable Disk (UPLOAD/DOWNLOAD)

Connect the machine to the computer's USB port through a dedicated data line in any state, System online now, At this point the operating



system will appear after the disk symbol for disk operations, For reading and uploading files.

Note: Please unplug the transmission line when transferring files on-line/down-line, In order to avoid the loss of files or machine system error, such as a crash.

十一. Formatted memory

In online mode, the disk is found in the system to format the memory (Windows 2000 +, Select "FAT32" low-level formatting) .

Note: When formatting, As you format your computer hard disk, floppy disk the same way (Select removable disk to format) .

十二. Troubleshooting

Problem	Cause	Solutions
Recording stop working	Not in the recording state; Low battery; Memory capacity has been raised to the limit or full recording mode;	Turn to recording state; Timely charge; Delete some files or move them to an external device;
Unable to open audio files	Low battery; No audio file; The minimum volume;	Timely charge; Confirm documents; Adjust the volume;
Words on the screen are abnormal	The language selection correctness	Choose correct language
No sound from the speaker	Confirm that there is earphone; The minimum volume; Check the recording format;	Remove the headset; Adjust the volume; Select the correct recording format;
No sound from headphones	Confirm whether the headset is connected properly; The minimum volume; The damaged audio or MP3 files caused the noise or no voice;	Connect the headset properly; Adjust the volume; Check whether audio or MP3 files are damaged, make sure the file integrity;
Unable to properly upload/download the audio file	Check whether the USB cable is damaged; Whether USB connection is normal; Check whether there are gaps in the memory;	Ensure that no damage of the USB connection; Normal USB cable connection; Delete blank memory;

Statement: Our company won't in charge of data missing caused by using the machine or repairing it. Therefore please back up on your own if there's important data in the machine.



用户操作使用说明书

声明事项:

首先对您使用本公司的数码产品表示感谢!

在使用之前请先阅读此说明书,正确使用此产品。

为了更好的服务,本使用手册的内容可能变更。

因为产品的性能和功能而发生的变更,将不做另行通知。

如果产品的实际设置和使用方法与本手册不一致,请访问本公司网站查询最新产品信息。

注意事项:

- 1、 请勿试图打开、修复或改装本产品。
- 2、 请勿在禁止使用电子产品的地区(如飞机上等)使用本产品。
- 3、 请勿将产品或其配件放入口中。
- 4、 请勿将产品放入水中或其他液体。
- 5、 请勿在特冷、热、潮湿和多尘的环境中使用本产品。

警告事项:

- 1、 请勿摔落产品本身或其配件,以免导致故障。
- 2、 请勿让产品暴露强光或热源下,以延长产品的本身寿命。
- 3、 长时间不使用本产品,请将电池充满,并将电源开关拨到“关”位置。
- 4、 请勿用力拔除及上下、左右摆动连接的配件(如:耳机、麦克风、USB连线等)。
- 5、 请注意本公司对使用本产品所造成的损失或苛刻的赔偿无任何责

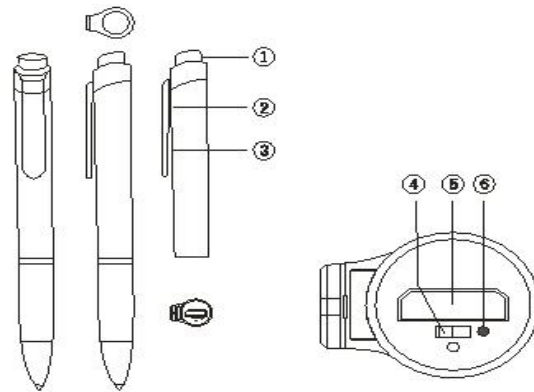
任。

6、 本公司对使用本产品或维修时所发生的资料损失不负任何责任。

因此若在产品内存有重要资料，请自行备份。

7、 请注意本产品禁止使用在非法途径上。例如：他人隐私或窃听等。

外形说明



- (1) 录音键 (2) 挂钩 (3) 操作指示灯
(4) **OFF** (电源关) (5) USB 接口 / 线控器接口 (6) **ON** (电源开)

一. 开机/关机:

- 1 当电源开关拨到“•”即“ON”位置时，则本机立即自动开机。拨到反方向“OFF”时则关机。
- 2 开机时红/蓝指示灯同时指示，初始化完后转蓝灯长亮指示（如录音键按下时直接进入录音状态）则进入待机模式（待机状态下1分钟后指示灯熄灭）。

二. 录音:

1. 待机状态，按下“录音”键进入录音状态（录音时红灯闪烁3次指示后关闭）此时正录音中。
2. 在录音过程中再按起“录音”键停止并保存录音文件（此时红色指示灯指示后转蓝灯长亮指示）即退出录音并进入待机状态。
3. 本机器支持边充电边录音（在录音状态时连上充电器能继续录音）。
注：最多可录999个文件，请定时清理录音文件夹内的录音文件。

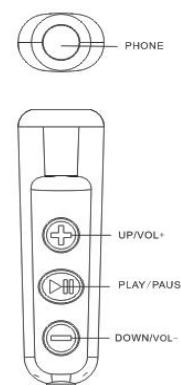
三. 播放（语音/音乐播放）

在开机状态下本机接入线控器后（先将机器连线控器后再开机或录音状态时再线控器）都会自动转换到播放状态。播放时蓝灯慢闪指示，播放暂停时蓝灯长亮指示（暂停超1分钟指示灯关闭）。

注：机器会自动各生成一个 MUSIC 和 RECORD 文件夹，音乐文件必需要放在 MUSIC 文件夹内才能播放，录音文件会自动记录音到 RECORD 文件夹。

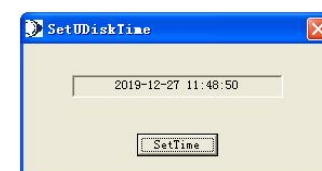
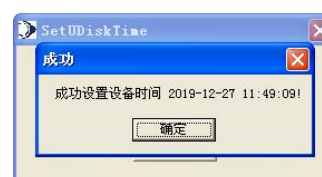
四. 线控操作

在开机状态时接入线控器播放器后会自动播放当前语音或音乐文件。播放时长按“播放”键进行语音模式和音乐模式的相互转换（此时红灯会指示一次）。播放时短按“播放”键暂停播放，再短按为继续播放。播放时短按“音量+”键进入上一首选择，短按“音量-”键进入下一首选择，长按“音量+”键进入音量增加调节，长按“音量-”键进入音量减小调节，播放暂停或停止状态时长按“音量+”键进入删除菜单。



五. 日期时间修改

1. 工具修改时间：将机器通过专用数据线和 P C（电脑）USB 连接后(电脑上会显示可移动磁盘盘符)，在我的电脑上打开可移动磁盘内随机附带的时间修改工具, 点击该修改工具，出现“成功设置设备时间”后再点“确认”则自动修改成电脑上的系统时间。



2. 文件修改时间：可通过随机附带的“timeset”TXT 文件修改

时间和日期。如下图：**10:50 2019-4-28**

将机器连接到电脑
//记事本打开后按F5自动同步电脑时间如上的格式

找到该移动磁盘内的“timeset”文件打开，按上图修改日期时间后按保存退出 USB 后重起机器即可自行修改本机时间。

注意：此功能在录音时间不准确或长时间不使用该机器时电源电量耗完导致至时间不准确时使用。

六. 删除功能：（只能在播放暂停时有效）

在播放（语音或音乐播放）时短按一下“播放”键进入播放暂停状态（暂停时蓝灯长亮），长按“音量加”键进入删除（红蓝灯指示），短按音量减键取消删除，短按“播放”键确认删除此时红蓝指示灯快速交替闪烁指示直到转为蓝灯长亮，表示删除成功。每次操作只能删除当前播放的那个文件。

七. TXT 文档设置：（只能在电脑上面设置）如下图，图中的参数为出厂默认设置。

```
BIT:6 //比特率:0-5级设置(采样率越高录音清晰度越高则功耗越大)
GAIN:5 //录音灵敏度:1-7级调节(越大录音声音越大)
PART:90 //录音分割(10~240分)例:30分为每录音30分钟保存一个文件
VOR:0 //录音声控 0-关闭 1-打开默认门槛修改工具可调 >1 声控门槛120-10*门槛值
```

1. BIT:为调整比特率：可选择 0-5 的比特率设置，

0-192k, 1-32k, 2-64k, 3-128k, 4-192k, 5-384k, 6-512k, 7-768k, 8-1024k, 9-1536k 0 和 5-9 是 WAV 格式 1-4 是 mp3 格式（采样率越高录音效果越好，则功耗也越大）在 BIT: 后面设置。

2. GAIN:为调整录音灵敏度：可选择 1-7 的录音灵敏度，数字越大录音声音越大，录音距离越远噪音会同比放大属正常现象。如果您的环

境噪音特别大（如周围有电机，马路边，市场，风机）可以把数字调到最小，把设备离音源越近噪音越小，灵敏度低距离远的声音有可能录不到，噪音的大小是取决于灵敏度高和离音源的距离和环境噪音。在 GAIN：后面设置。

3. PART:为调整录音分割：可选择 10-240 分钟分段文件的时间，在 PART：后面设置。

4. VOR:为调整声控灵敏度：可选择 1-5 的灵敏度，数字越大越灵敏，数字大的灵敏度适合在音源小、距离远的场景使用，数字小的灵敏度适合在音源大、距离近的场景使用。在 VOR：后面设置。

注意：设置好 TXT 文档后一定要选择保存，如果没有选择保存，设置的 TXT 的文档无用；TXT 文档设置文件夹不能删除，一旦删除了将会恢复出厂设置。

八. 充电

1. 充电时，充电过程中红蓝指示灯交替指示，充电饱和时转蓝色指示，机器低电时则红灯闪烁指示直到电池电量消耗到一定值后自动关机。
2. 本机支持边充电边录音。

九. 可移动磁盘（上传/下传）

1. 本机只有在关机状态下才能连电脑或支持 OGT 功能的手机。



2. 在关机状态时将机器的

USB 口插入 PC（电脑或支持 OGT 功能的手机）的 USB 口，系统均将立即联机，操作系统中出现磁盘盘符后，即可进行磁盘操作。.

3. 上传/下传：当电脑或支持 OGT 功能的手机检测到可移动硬盘后，您要把 MP3/WMA 文件或其它文件上传/下传。
4. 本机支持边充电边录音功能，在录音时不能连电脑或手机，必需先蒋机器关机或在非录音的其它状态下才能连电脑或手机进行读取文件和上下传文件。

注：在连机上/下传文件时请误拔传输线，以免造成文件丢失或机器系统出错死机等。

十. 格式化内存

- 1、将机器插入 P C（电脑或支持 OGT 功能的手机）USB 接口，进入“USB”连接模式，在系统内找到该可移动磁盘对机器内存进行格式化处理。（注：WINDOW2000 以上版本，选择“FAT32”低级格式化。）
- 2、在电脑的任何系统下格式化，都如您格式化电脑硬盘、软盘的方法相同（即选定“可移动磁盘”时行格式化）。

十一. 故障解决

问题	原因	措施
任何灯不显示	电池电量不足； 是否有开机；	及时充电； 打开电源；
不能录音	没调至录音状态； 电池电量不足； 内存容量已到极限或 已满	调至录音状态； 及时充电； 删除部分文件或移动到外部设备上
无法打开录音文件	电池电量不足； 没有录音文件； 音量调为最小	及时充电； 确认文件； 调节音量；

耳机没有声音	确认耳机是否正常连接； 音量调为最小； 录音或MP3文件被破坏制造不同程度的噪音， 甚至播放无声；	连接好耳机； 调节音量； 检查录音或MP3文件是否被破坏，确保文件完整；
不能够正常上传/下载录音文件	检查USB连接线是否有损坏；USB连接是否正常； 检查是否尚有空白的记忆体；	保证USB连接线没有损坏； 正常连接USB线； 删除空白记忆体；

产品质保卡

产品型号：_____ S/N: _____

经销商名称：_____ 购买日期：_____

经销商盖章处：_____

更换/维修日期	更换/维修记录	更换/维修单位 (盖章)
_____	_____	_____
_____	_____	_____
_____	_____	_____