

USER MANUAL

HUNTING TRAIL CAMERA



FC CE UK CA I ♻️ WEEE ♻️

FR
Les piles et batteries se recyclent

A DÉPOSER EN MAGASIN
A DÉPOSER EN DÉCHÈTERIE

OU

Points de collecte sur www.quefairemesdechets.fr

MADE IN CHINA

Catalog

English Version-----Page 02-08

CAMERA USE WARM TIPS -----Page 03

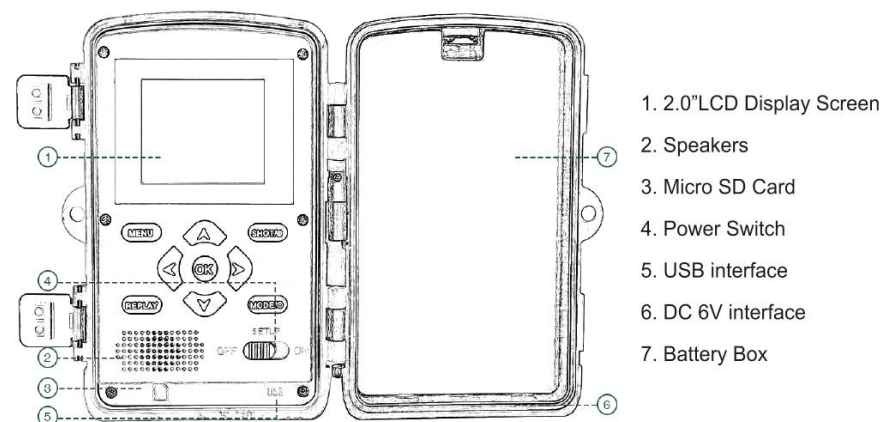
PREPARATION BEFORE USE-----Page 03-04

Quick steps to use-----Page 05

Camera parameter setting-----Page 06-07

Camera FAQ-----Page 08

Camera Overview



USER MANUAL

The instruction of operation keys (Turn the switch to SETUP)

OFF	Power off
SETUP	The screen lights up, set menu, parameters, mode, etc.
ON	Wait 5 seconds, after the screen goes off, the camera enters infrared sensor mode
MENU	After the screen lights up, press the MENU, Setting the functions and parameters of the camera.
REPLAY	Press REPLAY to start replay mode, up and down keys to select, OK key to play / pause, and then press it to exit
SHOT	Take photo/video manually
MODE	Manually switch between photo/video modes
^	Move up
v	Move down
<	Move left
>	Move right
OK	Confirm button

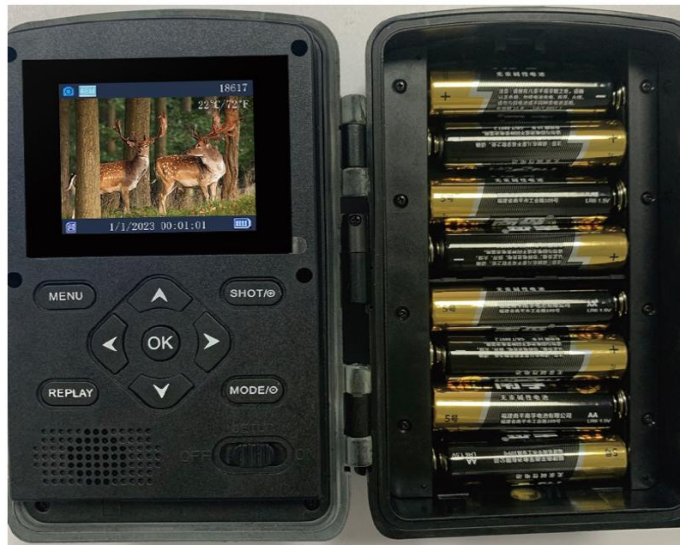
CAMERA USE WARM TIPS

1. SD Card and batteries are needed and batteries NOT included in the package.
2. Please format the SD card in the camera when using it for the first time.
3. To give the camera a longer standby time, we recommend using 8 x 1.5V AA alkaline batteries.
4. Fasten the camera at a height of 1-2 m. Keep the camera lens and shooting target location at 45 degrees to achieve the best shooting angle and to avoid overexposed.
5. In order not to affect the effect of the camera, please take off the protective film on the camera lens.
6. The battery and the 6V power cord cannot be used at the same time, otherwise the camera will not work.

PREPARATION BEFORE USE

■ There are 2 ways to connect the camera to the power supply: (cannot be used at the same time)

1. Install 8 X 1.5V AA batteries (note the positive and negative poles)



2. Use the 6V power cable in the camera (Since there is no built-in battery, the camera will power off when unplugged)



3. Insert the Micro SD card (4GB -128GB) with the chip side down.



■ Cautions:

- The camera needs to be turned off before inserting and removing the Micro SD card
- This camera supports 4GB -128GB memory cards
- The larger the memory of the Micro SD card, the longer it takes for the camera to recognize it, up to 10-20 seconds, so please be patient.
- Micro SD card needs to be formatted before starting recording
- The batteries and the 6V power cord cannot be used at the same time

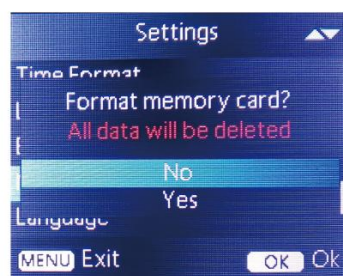
Quick steps to use

Step 1. switch to **SETUP** position, wait for the screen to light up



Step 2. Press the "**MENU**" button to enter the camera settings: Mode, Photo Pixel (Maximum 48M) ,Video Resolution (Max. 4K)

Step 3. Press "**V**" to select "Format" to format the SD card.



Step 4. Ready to record: switch to the **ON** position, wait for 10 seconds, the screen goes off, the camera enters the infrared sensor, there is a sensed object, take pictures and video, and save in the memory card. No induction objects, the camera enters standby mode, will not record video or photos.



Step 5. Turn off: switch to the **OFF** position Turn off

Step 6. Remove the SD card, connect to the computer to view the recorded video. Or the camera connected to the USB cable to the computer, the switch pushed to the **SETUP** position, connect to the computer to view photos and video files.

Camera parameter setting (switch moved to SETUP position)

Press "MENU" key to enter the MENU(OK key to confirm, MENU to return)

1. Mode Setting: Pictures/Video/ Pictures+Video
2. Photo Pixel: 8M, 16M, 24M, 36M, 42M, 48M
3. Continuous Shooting: 1Photo, 2Photo, 3 Photo, 4Photo, 5Photo
4. Video Length: 5s,10s, 20s, 30s, 1 minute
5. Video Resolution: VGA, 720P, 1080P, 2.7K, 4K
6. PIR Sensitivity: Low, Med, High
7. PIR Interval: Time between one shot and the next
8. Timer: When turned on, you can set the time period when the camera automatically starts to sense the recording.

For example: set from 21:00 to 23:00, the camera will turn on motion sensing during this time, indicating that the camera will only work during this 2-hour period, the camera only records video or pictures via infrared sensing during these 2 hours.

9. Timer Lapse: Set the operate interval time, and the camera will automatically start recording when the interval time is up in "**ON**" mode (independent of the camera sensor function).

For example: set the time to 00:30:00, shooting mode is video, the length of the video is 3 minutes, the camera will shoot 3 minute of video every 30 minutes, stop 30 minutes, and then shoot 3 minutes of video. Even if no object movement is sensed, 3 minutes of video will be taken when the 30 minutes are up.

Note: Timer and Timer lapse cannot be turned on at the same time, otherwise the camera will not work

10. Auto Power Off: Off/1mins/3mins/5mins (Set automatic shutdown when the switch is left in the "**SETUP**" position without operation)
11. Language: English/ Deutsch/ Français/ Italiano/ Espanol/ Polski/简体/日本語
12. Date/time:Y/M/D ,When the battery is removed, the camera time is reset.
13. Record Audio: Off/ On, Synchronized with the recording video, not recorded separately. If you select OFF, there is no sound in the video; Select ON, the video has sound.
14. Device Sound: High/ Med/ Low/ Off , Adjust the camera button sound
15. Time Stamp: OFF: the photo/video won't show date and time; ON: the photo/video will show date and time
16. Format: Before recording with the camera for the first time, you need to format the SD card
17. Default Setting: Select OK, the camera will restore factory settings

■ To view REPLAY after recording

1. Turn the switch from “ON” to “SETUP” position, the screen will light up, press “REPLAY” button to see the camera photo/video , up and down keys to select, OK key to play / pause
2. In “REPLAY” mode, press MENU to Delete or Protection the file.
3. Press “REPLAY” to return to the main page

■ Cautions: Protected pictures cannot be deleted, you need to choose to unlock one or unlock all before you can delete

Camera Parameters

Lens	5 Million CMOS
Screen	2.0 inch LCD
Mode	Pictures/Video/Pictures+Video
Video Resolution	VGA, 1080P, 2.7K, 4K
Video Format	AVI
Video Length	5s, 10s, 20s, 30s, 1 minute
Photo Resolution	8M, 16M, 24M, 36M, 42M, 48M
Image Format	JPG
Trigger Time	0.05s-0.3s
IR Distance	1-30 m
PIR Angle	130°
Lens Angle	130°
IR LED	46 pcs 940nm invisible lights
ISO	Automatic
Memory Card	4G~128GB
Battery	8 AA batteries / external DC 6V
Waterproof	IP66 (Recommended to be mounted with the camera lens facing downwards at 45 degrees for maximum waterproofing)
Net weight	300g
Size	140*98*73MM
Certification	CE, FCC, ROHS, WEEE
Working Temperature	-10°C ~ +60°C / -14°F ~ +120°F

Camera FAQ

LED lights have water mist	When the LED light is working, it will generate heat, and the inside of the lens will be fogged due to the temperature difference with the outside of the lens. This is a normal physical phenomenon. After a period of time after the camera is turned off, the water mist will dissipate automatically.
Screen turns off after countdown	Switch from SETUP to ON position, after the 5-second countdown ends, it is normal for the screen to go off, indicating that the camera is working.
Cannot be switched on	Check the battery direction whether the contact is good
	The switch must be pushed to the SETUP position to turn on the camera
Cannot be switched off	The switch goes directly from OFF to ON , it's wrong
	Make sure that the switch is fully pushed to the OFF position
Camera does not sense	Frequently moving the switch will cause the switch to be broken, please remove the battery and install it again
	Possibly the SD card is not formatted
	Check that the switch is pushed to the ON
	Exceeded the sensing distance and sensing angle of the camera
Camera works all the time	Check if Timer and Timer Lapse are turned on at the same time
	Camera sensitivity set to low
	Select the default settings and restart the camera
Camera does not recognize SD card	The surrounding environment is complex, causing the camera to always sense motion
	Incorrect or overlapping parameter settings
	The larger the memory, the longer it will take for the camera to read the card, please wait 10 seconds.
The camera turns on and off frequently	Format SD card on computer or Replace the SD card
	SD card memory exceeds usage requirements, supports 4GB - 128GB
Camera power consumption fast	Battery and power cord used at the same time, please unplug the 6V power cord
	8 x 1.5V AA alkaline branded batteries are recommended
Only photos and no video	If the camera often works at night, it will consume power faster than during the day, and night vision needs to consume more power.
	Camera battery is low
Night vision does not work	Select the default settings and restart the camera
	The battery power is low, it is recommended to replace the new battery
The camera is not waterproof	Select the default settings and restart the camera
	The camera is mounted with the lens facing downwards at 45 degrees for maximum waterproofing.
Slow camera trigger speed	The camera is mounted with the lens facing downwards at 45 degrees for maximum waterproofing.
	PIR sensitive in the camera menu is set to high for faster triggering
Apple computer can't read camera files	The object is not in the optimal sensing range of the camera
	Video file type is AVI, may not be compatible, suggest changing video player