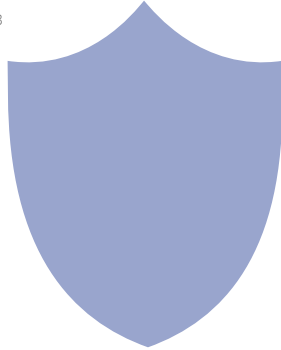


Long Standby Wi-Fi Audio Recorder with Low Power Consumption

User Manual
Version: Mar, 2023

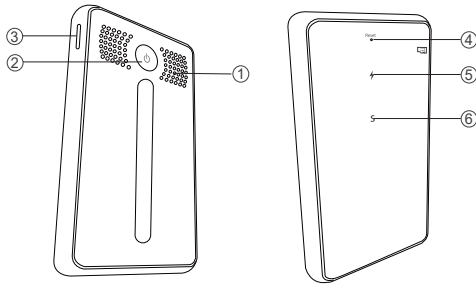


Size: 50x90x15mm



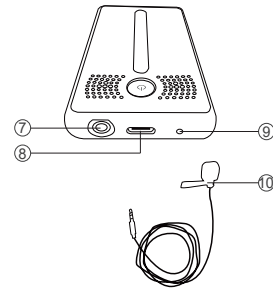
1

Product structure



- ① Microphone
- ② ON/OFF switch
- ③ Micro SD card plot
- ④ Reset key
- ⑤ Charging indicator
- ⑥ Working indicator

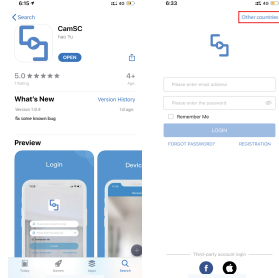
4



- ⑦ External Mic Input
- ⑧ USB port (Type-C)
- ⑨ Hole for external battery plug (Optional)
- ⑩ External Microphone

5

2. Open APP CamSC Pro, select current region at the top right corner. Register with email, or third-party account like Facebook or IOS account. (Tips: If a code doesn't arrive, please check the spam folder first.)

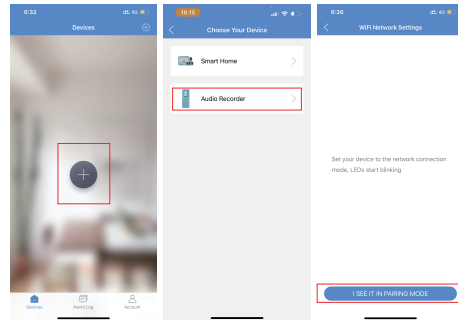


Step 2: Make device ready to pair

1. Long press ON/OFF for 2 seconds, the blue indicator is on means the device is on. And release the button and working indicator will be off.
2. Short press ON/OFF one time, the blue indicator blink quickly means the device is ready to pair.

8

Step 3: Connect WiFi
1. Open APP CamSC Pro >> Click + >> Audio Recorder >> Device in pairing mode >> CAM-xxxxxx.



9

Quick guide of Wi-Fi Audio Recorder function

1. Download & Install Free App <CamSC Pro> from App Store or Google Play;
Tips: Please allow "CamSC Pro" to notification, Bluetooth and location while using the App.
2. Enter App, select your region at the top right corner and register;
Tips: If a code doesn't arrive, please check the spam folder first.
3. Insert micro SD card --> Long press ON/OFF for 2 seconds and release --> Press ON/OFF one time again to pair (Blue indicators blinking = Pairing model is ready now.)
4. Enter App, Click + >> Audio recorder >> Pairing Mode >> Click device name >> Select Wi-Fi >> Input password > NEXT.
5. Device online in around 10 seconds & Wi-Fi live audio is ready.
6. If plug in the external microphone, the built-in microphone will be disabled.

P.S.: Contact local dealer for tutorial video setting up.

2

Hardwares Tips:

Working indicator status

1. Long press ON/OFF for 2 seconds, the blue indicator is on means the device is on. And release the button and working indicator will be off.
2. Short press ON/OFF one time, the blue indicator blink quickly means the device is ready to pair.
3. Working indicator will be off once device has been connected with local Wi-Fi.

Charging indicator status

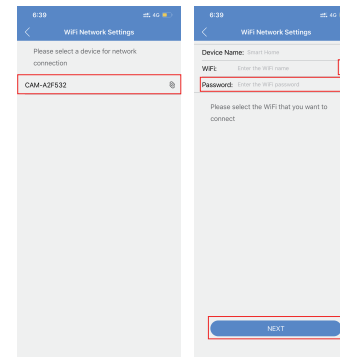
Red light blink means charging, and solid when fully charged

Turn Off & Reset

1. Long press ON/OFF for 2 seconds, the blue indicator blink twice and off means the device is turned off.
2. Reset pin press Reset hole for 2 seconds, device then is restored to factory default.

6

2. Click > at the end of WiFi to select the local 2.4G Wi-Fi, then input password. Click NEXT and wait around 10 seconds to finish the configuring; Device Binding Successful and online now.



10

Overview:

This Wi-Fi Audio Recorder is the 2nd generation powerful audio security device. It doesn't rely on SIM card transmission but is based on a wifi connection, so no monthly costs; And, it is with three modes including two power save modes for long standby use. Also, with the external mic, it can be used in universal cases.

First, it can be used for checking live time audio day and night, and record live audio info based on set sensitivity and push notification to mobile for security purposes;

Second, it has excellent recording effect and can ensure the high fidelity sound effect of playback recording. Also, it has cycle recording and work when charging.

Usages: Nanny audio recorder, Home/ Shop/ Office/ Warehouse

Warning : " illegal use is not allowed! Or, there will be consequences to bear! "

In the box:

- 1 x Wi-Fi Audio Recorder
- 1 x Micro SD Card Reader
- 1 x USB Cable
- 1 x User Manual
- 1 x Reset pin
- 1 x External Microphone

3

Wi-Fi Camera Connection Setting

Step1: CamSC Pro APP

1. Scan below QR code or search and download free APP named <CamSC Pro> in Apple APP store, Google play or Electronic market, and install it;

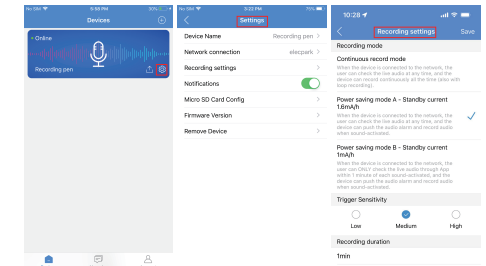


APP:CamSC Pro

Tips: Please allow "CamSC Pro" to notification, Bluetooth and location while using the App.

7

4. Click in APP'S first interface, select Recording Setting can choose the mode, to do device setting(such selection of mode & sensitivity) etc...



11

Wi-Fi Audio Recorder Normal Status

Device default with power save mode B, and can be changed.
Three models:

1. Continuous record mode

When the device is connected to the network, the user can check the live audio at any time, and the device can record continuously all the time (also with loop recording).

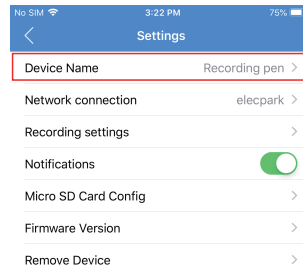
2. Power saving mode A - Standby current 1.6mA/h

When the device is connected to the network, the user can check the live audio at any time, and the device can push the audio alarm and record audio when sound-activated.

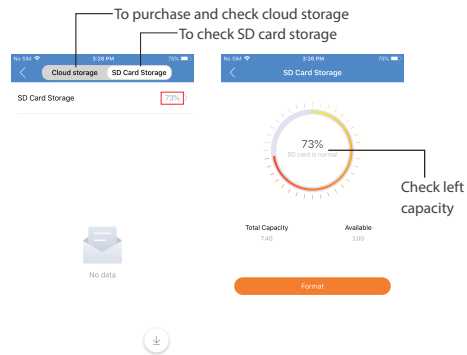
3. Power saving mode B - Standby current 1mA/h

When the device is connected to the network, the user can ONLY check the live audio through App within 1 minute of each sound-activated, and the device can push the audio alarm and record audio when sound-activated.

Set name: Press the  after the device, select Device Name
→ Input needed name like Office, Living room etc...



12



Tips: All audio records default save to SD card. If cloud storage purchased, device will upload the audio records in card to cloud automatically.

16

FAQ

1. Q: Is device with offline and low power notification?

A: Yes.

2. Q: What does the device do when WiFi off?

A: Keep searching WiFi signal 3mins, 10mins, 1hour, 2 hours, 5hours, 24hours later; If WiFi on, it will be connected to WiFi automatically.

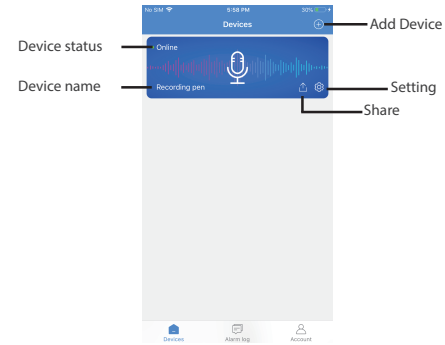
3. Q: If the steps in Page 9 can't move forward (Bluetooth Pairing Mode)?

A: Delete the App and Download again to test, and agree all permissions (Allow notification, Bluetooth and location).

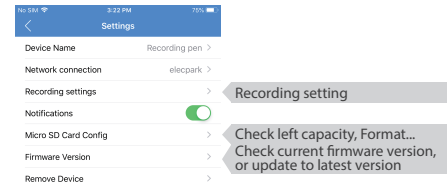


The end!

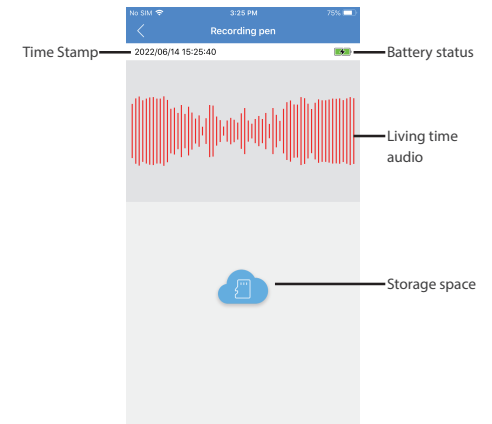
APP Introduction



14



18



15

Specification

Battery	3000mA
Charging time	Around 6 hours
Power consumption while working	80mA
Working time of Continuous record mode	Around 37.5 hours
Standby current - Power saving mode A	1.6mA/h
Standby time - Power saving mode A	Around 78 days
Standby current - Power saving mode B	1mA/h
Standby time - Power saving mode B	Around 125 days

Optional: If need, device can be plugged with external battery for super long term operation (Pls ask manufacturer to add external battery plug when production).

19