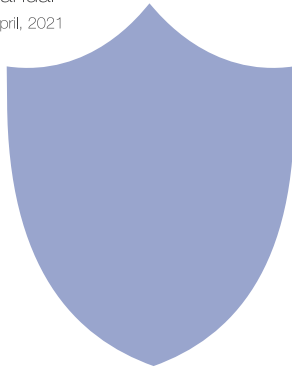


HD 1080P Wireless Security Wi-Fi Camera

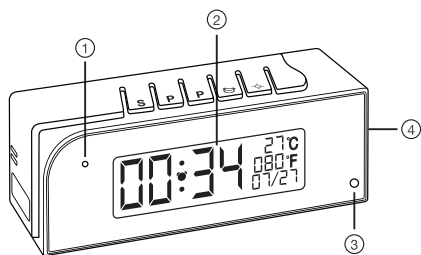
User Manual

Version: :April, 2021



5. Press icon on the right corner of camera --> WiFi Config -->Select local Wi-Fi (SSID) --> Input password --> Tap Next;
 - 6.Quit APP , wait 30 seconds (device restart automatically)and connected with set Wi-Fi(Wi-Fi indicator is solid);
 - 7.Enter APP to check live video locally or remotely anywhere.
- P.S.: Contact local dealer for tutorial video setting up.

Product structure of Tiny Clock ② :



- ① Camera
- ② Display
- ③ Invisible night vision leds (Turn ON/OFF Automatically)
- ④ Device UID & QR code



Size: 109x39x46mm



Tiny Clock ①

Overview:

These two fashion designed tiny clock,local temperature and humidity info which auto-sync from internet once connected with Wi-Fi; The most important, it is integrated with a powerful 1080p smart invisible Wi-Fi camera comes with 6 meters powerful night vision.

First, it can be used for watching live streaming video day and night , or taking photo and video by APP in smart-phone remotely after Wi-Fi connected; Also, it supports Point to Point (P2P) function, easily connected for local live video without Wi-Fi.

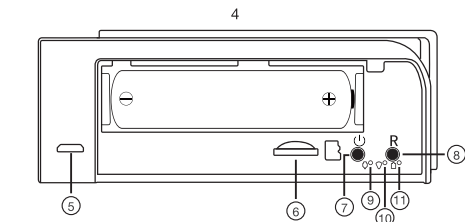
Second, it also support motion detect alarm function, cycle recording and work when charging.

Usages: Nanny camera, Home/ Shop/ Office/ Warehouse surveillance camera.....

Warning : " illegal use is not allowed! Or, there will be consequences to bear! "

In the box:

- 1 x Camera Unit
- 1 x 5V2A power adapter
- 1 x Micro SD Card Reader
- 1 x USB Cable
- 1 x User Manual



- ⑤ USB port
- ⑥ Micro SD card slot
- ⑦ ON/OFF Key
- ⑧ Reset Key
- ⑨ Power indicator
- ⑩ Wi-Fi indicator
- ⑪ Charging indicator

Clock part of Tiny Clock ②:

- S** Time/Alarm set
- P** Hour/Month set / 12 vs 24Hour
- P** Minute/Day set / 12 vs 24Hour
- Alarm on/off
- Turn off/on display

Tips: Local Time and Temperature info will be updated automatically every 2 hours after connecting to local Wi-Fi.

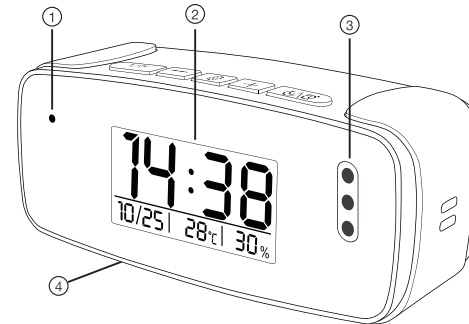


Size: 112x40x43mm



Tiny Clock ②

Product structure of Tiny Clock ①:



- ① Camera
- ② Display
- ③ Invisible night vision leds (Turn ON/OFF Automatically)
- ④ Device UID & QR code

Wi-Fi Camera Connection Setting

Step1: Download and install APP

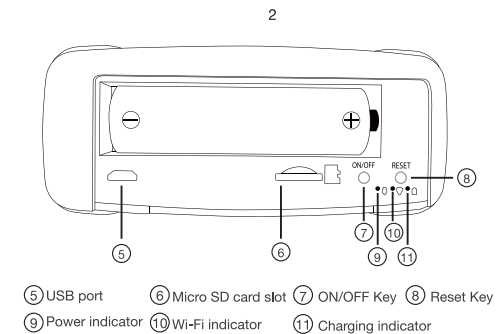
Scan below QR code or search and download free APP named <TinyCam Pro> in Apple APP store, Google play or Electronic market, and install it;

Tips: Please allow "TinyCam Pro" to access your location while you are using the app(for syncing local weather info).



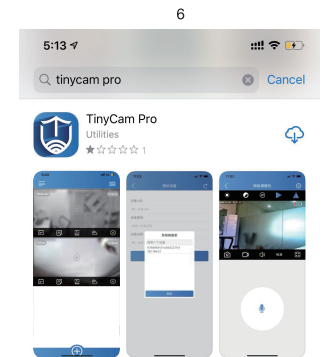
Quick guide of Wi-Fi camera function:

- 1.Download Free App <TinyCam Pro> from App Store or Google Play.
Tips:Please allow "TinyCam Pro" to access smartphone location while using the APP.
- 2.Take off back cover and pull out the battery insulator --> Insert micro SD card --> Press the ON/OFF key , wait for 1 minute (Power indicator and Wi-Fi indicator is flashing regularly.);
Tips: After above operation, please put on back cover and plug power adapter for long time use.
- 3.Enter smartphone settings --> Search and connect device's Wi-Fi named: AIS.....,wait till phone status bar appear Wi-Fi symbol ;
- 4.Enter APP, tap below icon --> LAN search --> Tap the found device --> Tap Add --> Camera Online then;
Tips:This step = P2P mode, can check video locally when without Wi-Fi.



Clock part of Tiny Clock ① :

- °C/°F** Short press = Centigrade degree to Fahrenheit
Long press = Turn off / on display
- +** 12h / 24h
- Time set
- Short press = Snooze
Long press = Turn off clock setting

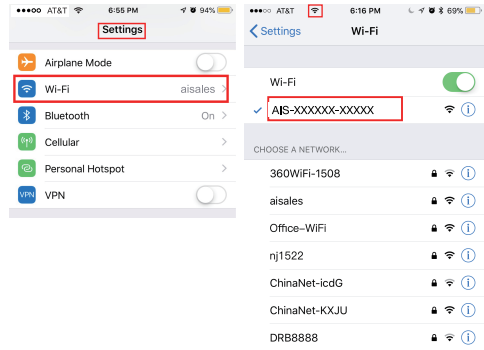


Step 2: Take off back cover and pull out the battery insulator --> Insert micro SD card --> Press the ON/OFF key ,wait for 1 minute (Power indicator and Wi-Fi indicator is flashing regularly.);

Tips: After above operation, please put on back cover and plug power adapter for long time use.

Step 3: Connect Wi-Fi

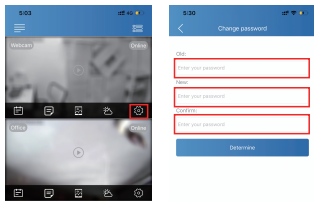
1. Open smartphone settings, search and connect the device's wireless signal named "AIS.....", wait Wi-Fi connected, and phone status bar appear Wi-Fi symbol.



11

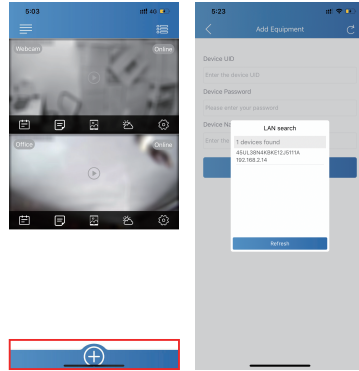
Set camera name and private code

Set name: Tap the icon after the camera, Input a new name(like Office ...) in Device Name;
Set new password: Tap the icon after the camera, Tap Device Password --> Old password = 123456.



15

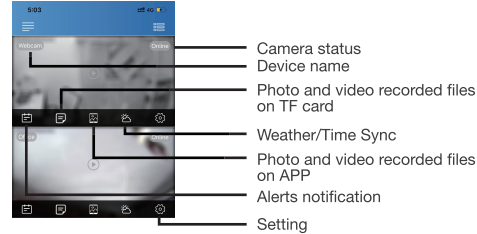
2. Enter APP, tap below "+" icon --> LAN search --> Tap the found device --> Tap Add --> Camera Online then;



Tips: This step = P2P mode, can check video locally when without Wi-Fi.

12

APP introduction:



Tips: 1. Please confirm phone setting has allowed TinyCam Pro App to access the location services;
2. A TF card(Micro SD card) must be inserted for saving alerts pictures.

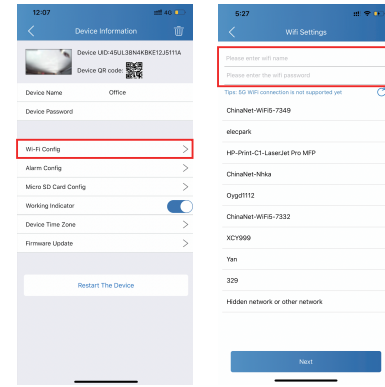
16

FAQ

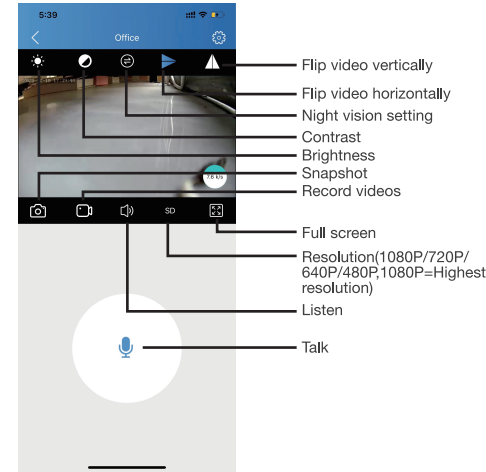
- Q: Time display is not stable, always blinking?
A: It's with low battery, please charge it.
- Q: Can't get device Wi-Fi signal?
A: Press reset key for 10 seconds and wait 1 minute.
- Q: Live video not smooth and clear?
A: Select suitable resolution according to the real time network environment.
- Q: Motion detect set and alarm?
A: 1). Set motion detect sensitivity in App Setting > Alarm Config;
2). When motion detected, camera will push a alarm message to your phone and take one picture for checking in the APP [Page 16 - Alert notification]. (A micro sd card MUST be inserted for saving alarm pictures)

19

3. Tap icon on the right corner of camera --> Wi-Fi Config --> Select local Wi-Fi (SSID) --> Input password --> Tap Next;

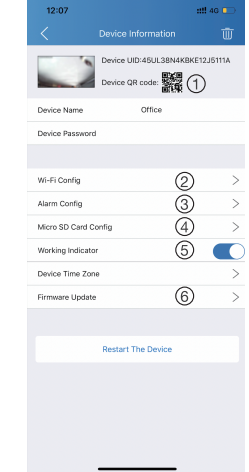


13



17

4. Quit APP , wait 30 seconds (device restart automatically)and connected with set Wi-Fi(Wi-Fi indicator is solid) ;
5. Enter APP and check live video locally or remotely anywhere.



14

- 1) Share camera with others by QR code
- 2) Wi-Fi Config: Set camera to connect to local Wi-Fi
- 3) Alarm Config: Set motion detection sensitivity
- 4) Micro SD Card Record Config: Set SD card record mode / Resolution / File length...
- 5) Working Indicator: To turn on/off device's working led
- 6) Firmware Update: Update device's latest firmware by app

18

Specification

Resolution	1 Mega CMOS
Video pixel in phone	Max 1920*1080
Video pixel in card	1080*720
Frames	Max 25fps
Compressed format	H.264
View angle	120 Degree
Type of memory card	TF card>=Class 4/10 and HC marked
Maximum capacity of memory card	128GB
PC operation system	Windows 7, 8 / Mac OS X
Play software	VLCPlayer/SMPlayer
Mobile phone operation system	Android/iOS
Web browser	IE7 and above,chrome,firefox
Power consumption	300MA/3.7V
Battery Capacity	Rechargeable 3000 mA
Recording	1 minute/ around 20MB
Working time in day time	Around 8 hours
Working time in night time	Around 3 hours
Charging time	3-4 hours
Power adapter	5V / 2A

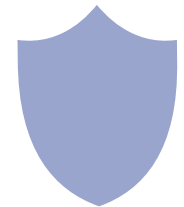
20

5. Q: Micro SD card instruction?
A: 1). Set motion detect sensitivity in App Setting > Alarm Config;
2). Once device is connected to Wi-Fi, can set SD management in App Setting > Micro SD Card Config.

6. Q: How to play micro SD card video?
A: 1). Use a card reader to read and play;
2). Use APP to play back [Page 16 - TF card recorded files];
3). Play back in good speed network.

7. Q: Forget camera password, or item goes abnormal?
A: Turn on camera and wait for 1 minute, press reset key around 10 seconds till back indicators off to restore factory default. Camera restarts and get ready again in 1 minute.

8. Q: Any operation video demo of the camera for setting up?
A: Please contact local dealer for video guide.



The end!

21