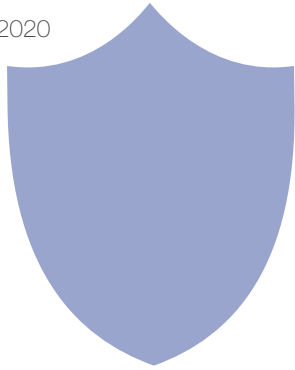


HD 1080P Wireless Security Wi-Fi Camera

User Manual
Version: July, 2020



Power Bank

1

Getting started of Wi-Fi camera part

Step1: Download and install APP

Search and download free APP named "HDSmartIPC" in Apple APP store, Google play or Electronic market, and install it.



HDSmartIPC

Step 2: Long press the power button until red and blue light on to turn on the device.

Wait for 1 minute (Blue light flashing and red light on).

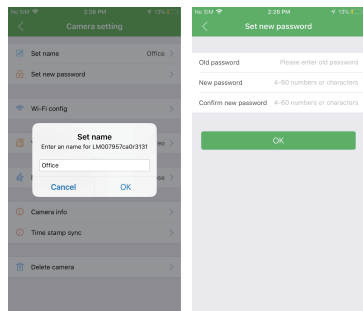
Step 3: Connect WiFi

4

Set camera name and private code

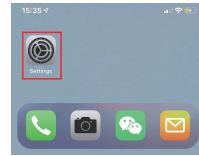
Set name: Press the gear icon after the camera and select Device settings, select Set name, insert name like Office, Room, etc.

Set new password: Press the gear icon after the camera and select Device settings, select Set new password and change it to new one. Default one is 8888.

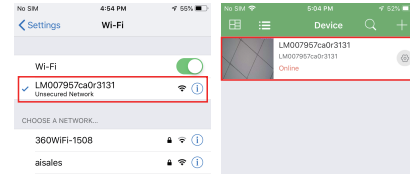


8

1. Open smartphone settings, search and connect the device's wireless signal named "AI/LM.....", wait Wi-Fi connected, and phone status bar appear Wi-Fi symbol.



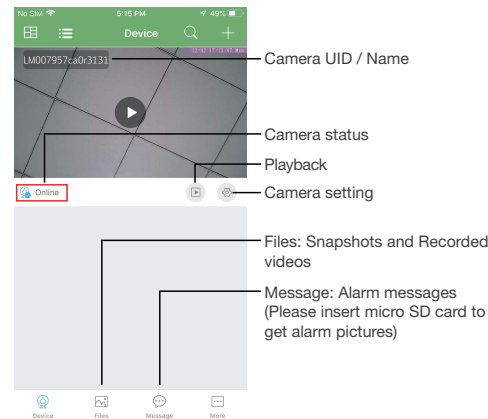
2. Enter APP, app will add just connected camera automatically, Camera Online then;



TIPS: This step = P2P mode, can check video locally when without Wi-Fi.

5

APP introduction:



9

Overview:

This security Wi-Fi camera kit is equipment with 1080P smart Wi-Fi camera for live streaming video, and it comes with motion detection video recording and alarm.

Fashion design and easy operate to DIY any kinds of unique and exclusive security cameras for home & business surveillance.

Usages: Nanny camera, home/ shop/ office/ warehouse surveillance camera, etc.

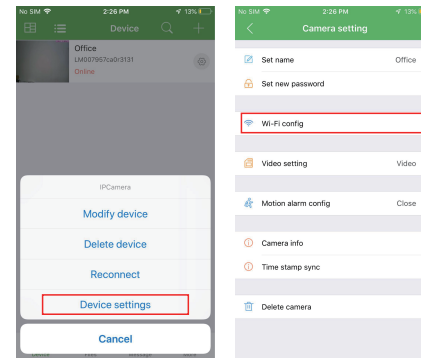
Warning: 1. Illegal use is not allowed! Or, there will be consequences to bear! 2. Charge the device regularly to keep good performance and for emergency.

In the box

1 x Wi-Fi camera	1 x USB cable	1 x Micro SD card reader
1 x User manual	1 x Reset pin	1 x AC power adapter

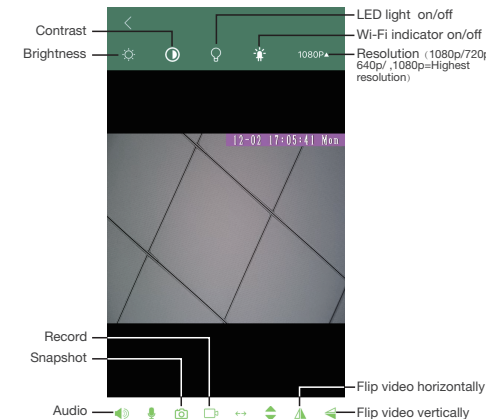
2

3. Press the gear icon after the camera and select Device settings, select Wi-Fi Config.



6

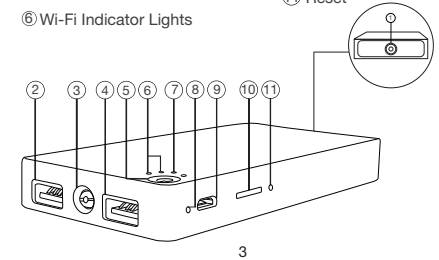
Live video page - Click camera to check



10

Product Structure of Power Bank

- ① Camera
- ② USB Output-1 1A
- ③ LED Light
- ④ USB Output-2 1A
- ⑤ Power Button (For Wi-Fi Camera)
- ⑥ Wi-Fi Indicator Lights
- ⑦ Power Indicator Light
- ⑧ Forced Shutdown Button
- ⑨ Input 5V
- ⑩ Micro SD Card Slot
- ⑪ Reset

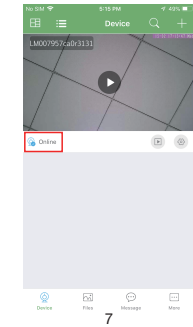


3

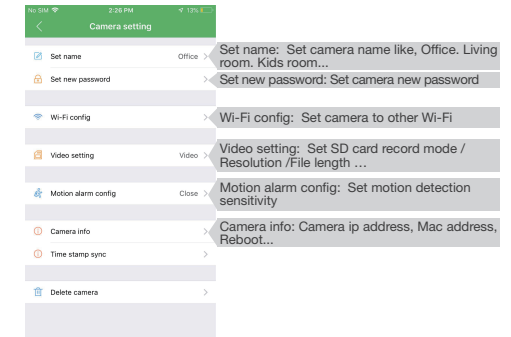
4. Select the router Wi-Fi and input password, camera will be connected to the router Wi-Fi. The smartphone will disconnect the signal from device and connect to the router Wi-Fi.

5. Quit APP, and device restart automatically and ready again in 30 seconds.

6. Enter APP and check live video locally or remotely anywhere.



7



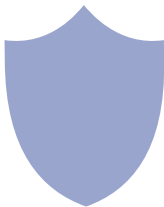
TIPS: Each setting in Device Settings, please scroll down and press ok to save the setting.

11

Set and watch by PC remotely (Windows Only)



Scan to download PC Client



The end!

Specification

Resolution	1.0 Mega pixel CMOS lens
Video pixel in phone	Max 1920*1080
Video pixel in TF card	1280*720
Frames	20fps
Compressed format	H.264
View angle	120°
Type of memory card	TF card>=Class 4/10 and HC marked
Maximum capacity of memory card	128GB
PC operation system	Windows 7, 8 / Mac OS X
Play software	VLCPayer/SMPlayer
Mobile phone operation system	Android/iOS
Web browser	IE7 and above,chrome,firefox
Battery capacity	2800mA
Recording	1 minute/ around 3MB
Working time	About 9 hours
Charging time	About 8-9 hours
Power adapter	5V / 2A

FAQ

1. Q: Can't get device Wi-Fi signal?
A:Press reset key for 10 seconds and wait 1 minute.

2. Q: Live video not smooth and clear?
A: Select suitable resolution according to the real time network environment.

3. Q: Motion detect set and alarm?
A: 1). Set motion detect sensitivity in Motion alarm config;
2). When motion detected, camera will push a alarm message to your phone and take one picture for checking in the APP [Page 9 - Message]. (A micro SD card MUST be inserted for saving alarm pictures)

4. Q: How to play micro SD card video?
A: 1). Use a card reader to read and play;
2). Use APP to play back [Page 9- ▶];
3). Play back in good speed network.
5. Q: Forget camera password, or item goes abnormal?
A: Turn on camera and wait for 1 minute, press reset key around 10 seconds till back indicators off to restore factory default. Camera restarts and get ready again in 1 minute.

6. Q: Any operation video demo of the camera for setting up?
A: Please contact local dealer for video guide.