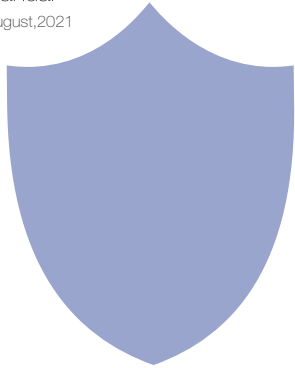


HD 1080P Wireless Security Wi-Fi Camera

User Manual

Version: August,2021



Size:42x37x37mm



Quick guide of Wi-Fi camera function:

1.Download Free App <TinyCam Pro> from App Store or Google Play.

Tips:Please allow "TinyCam Pro" to access smartphone location while using the APP.

2.Insert micro SD card--> Plug in Power adapter --> Turn on the ON/OFF switch, wait for 1 minute(Wi-Fi indicator is flashing regularly);

3.Enter smartphone settings --> Search and connect device's Wi-Fi named:CAM.....,wait till phone status bar appear Wi-Fi symbol 📶 ;

4.Enter APP, tap below "⊕" icon --> LAN search-->Tap the found device --> Tap Add --> Camera Online then;

Tips:This step = P2P mode, can check video locally when without Wi-Fi.

5. Press ⚙️ icon on the right corner of camera --> WiFi Config -->Select local Wi-Fi (SSID) --> Input password --> Tap Next;

6.Quit APP , wait 30 seconds (device restart automatically)and connected with set Wi-Fi(Wi-Fi indicator is solid);

7.Enter APP to check live video locally or remotely anywhere.

P.S.: Contact local dealer for tutorial video setting up.

Overview:

This mini wireless Wi-Fi security camera is integrated with powerful 1080P smart Wi-Fi camera comes with 5 meters powerful night vision.

First, they can be used for watching live streaming video day and night, or taking photo and video by APP in smart-phone remotely after Wi-Fi connected;Also, it supports Point to Point(P2P) function, easily connected for local live video without Wi-Fi.

Second, it also support motion detect alarm function, cycle recording and work when charging.

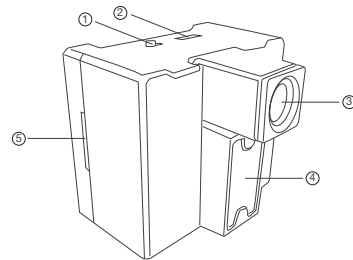
Usages: Nanny camera, Home/ Shop/ Office/ Warehouse surveillance camera.....

Warning : " illegal use is not allowed! Or, there will be consequences to bear! "

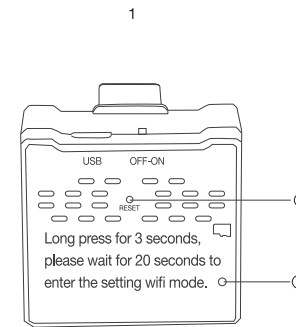
In the box:

1 x Camera Unit 1 x User Manual 1 x USB Cable 1 x Reset Pin
1 x Micro SD Card Reader

Product structure

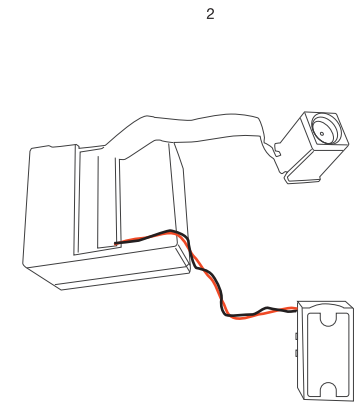


- ① ON/OFF switch ② USB port ③ Camera
- ④ Invisible night vision leds ⑤ Micro SD card slot



- ⑥ Reset key ⑦ Mic

Tips : Long press for 3 seconds, please wait for 20 seconds to enter the setting wifi mode.

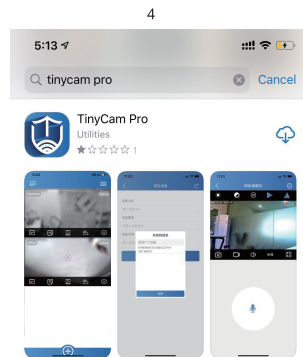


Wi-Fi Camera Connection Setting

Step1: Download and install APP

Scan below QR code or search and download free APP named <TinyCam Pro> in Apple APP store, Google play or Electronic market, and install it;

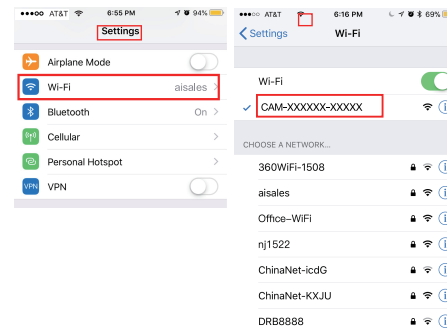
Tips: Please allow "TinyCam Pro" to access your location while you are using the app(for syncing local weather info).



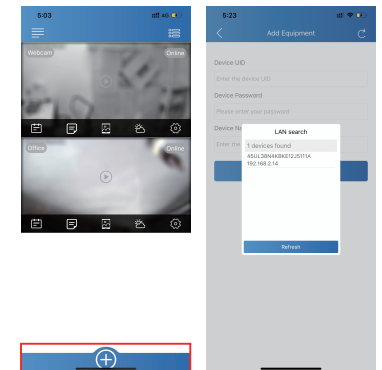
Step 2: Insert micro SD card--> Plug in Power adapter --> Turn on the ON/OFF switch, wait for 1 minute(Wi-Fi indicator is flashing regularly);

Step 3:Connect Wi-Fi


1.Open smartphone settings, search and connect the device's wireless signal named "CAM.....",wait Wi-Fi connected, and phone status bar appear Wi-Fi symbol.

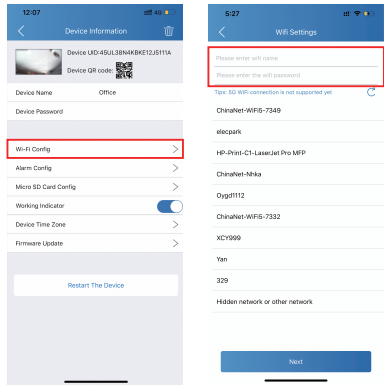


2.Enter APP, tap below "⊕" icon --> LAN search-->Tap the found device --> Tap Add --> Camera Online then;



Tips: This step = P2P mode, can check video locally when without Wi-Fi.



3. Tap  icon on the right corner of camera → Wi-Fi Config → Select local Wi-Fi (SSID) → Input password → Tap Next;

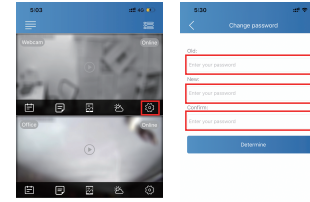


11

4. Quit APP , wait 30 seconds (device restart automatically)and connected with set Wi-Fi(Wi-Fi indicator is solid) ;
5. Enter APP and check live video locally or remotely anywhere.

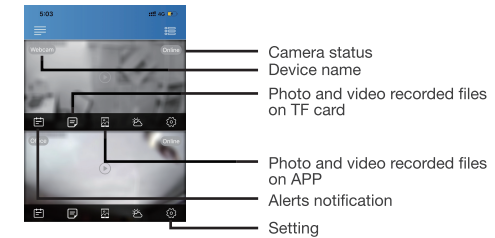
Set camera name and private code

Set name: Tap the  after the camera, Input a new name(like Office ...) in Device Name;
Set new password: Tap the  after the camera, Tap Device Password → Old password = 123456.



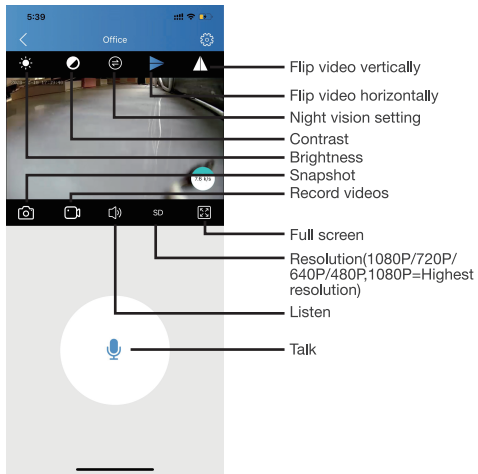
13

APP introduction:

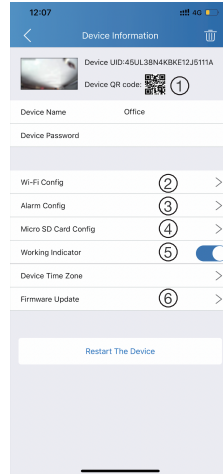


Tips: 1. Please confirm phone setting has allowed TinyCam Pro App to access the location services;
2. A TF card(Micro SD card) must be inserted for saving alerts pictures.

14



15



12

- ① Share camera with others by QR code
- ② Wi-Fi Config: Set camera to connect to local Wi-Fi
- ③ Alarm Config: Set motion detection sensitivity
- ④ Micro SD Card Record Config: Set SD card recordmode / Resolution /File length...
- ⑤ Working Indicator: To turn on/off device's working led
- ⑥ Firmware Update: Update device's latest firmware by app

16

Specification

Resolution	2 Mega CMOS
Video pixel	Max 1920*1080
Compressed format	H.264
View angle	100 Degree
Night Vision	5M
Type of memory card	TF card>=Class 4/10 and HC marked
Maximum capacity of memory card	128GB
PC operation system	Windows 7, 8 / Mac OS X
Play software	VLCPlayer/SMPlayer
Mobile phone operation system	Android/iOS
Web browser	IE7 and above,chrome,firefox
Power consumption	250mAh without night vision 350mAh with night vision
Battery Capacity	Rechargeable 950 mA
Recording	1 minute/ around 7MB
Working in day time	About 4 hours
Working in night time	About 3 hours
Charging time	About 5 hours

17

FAQ

1. Q: Time display is not stable, always blinking?
A: It's with low battery, please charge it.
2. Q: Can't get device Wi-Fi signal?
A: Press reset key for 10 seconds and wait 1 minute.
3. Q: Live video not smooth and clear?
A: Select suitable resolution according to the real time network environment.
4. Q: Motion detect set and alarm?
A: 1). Set motion detect sensitivity in App Setting > Alarm Config;
2). When motion detected, camera will push an alarm message to your phone and take one picture for checking in the APP [Page 14 - Alert notification]. (A micro sd card MUST be inserted for saving alarm pictures)

18

5. Q: Micro SD card instruction?
A: 1). Set motion detect sensitivity in App Setting > Alarm Config;
2). Once device is connected to Wi-Fi, can set SD management in App Setting > Micro SD Card Config.

6. Q: How to play micro SD card video?
A: 1). Use a card reader to read and play;
2). Use APP to play back [Page 14 - TF card recorded files];
3). Play back in good speed network.

7. Q: Forget camera password, or item goes abnormal?
A: Turn on camera and wait for 1 minute, press reset key around 10 seconds till back indicators off to restore factory default. Camera restarts and get ready again in 1 minute.

8. Q: Any operation video demo of the camera for setting up?
A: Please contact local dealer for video guide.



The end!