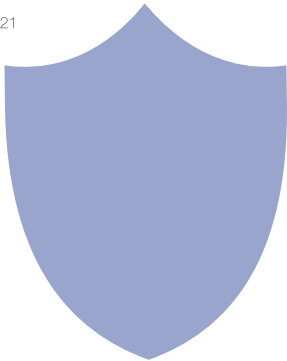


Ultra Long Standby Wi-Fi Security Camera
with Low Power Consumption

User Manual

Version: August,2021

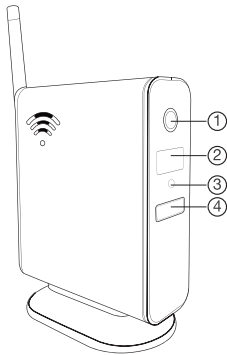


Size: 56x121x136mm



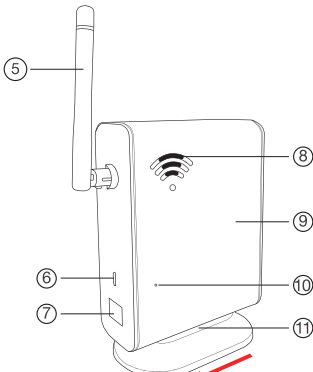
Tips: Please take off the transparent protect film on the device and replace it with a black lens cover (Plastic) before using.

Product structure



- ① Camera
- ② Invisible night vision leds
- ③ Light sensor
- ④ PIR sensor

3



- TIPS:** Push the router base left to open.
- ⑤ Antenna
 - ⑥ USB port
 - ⑦ Dummy net cable port
 - ⑧ Camera speaker
 - ⑨ Side cover (Can be opened)
 - ⑩ Mic
 - ⑪ Router Base (Push left)

4

Reset key tips:

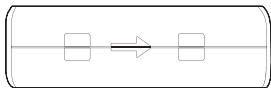
One press to restart device;
4 seconds press to pair with WiFi (First double beep);
6 seconds press to reset device (Second double beep).

Wi-Fi indicator tips:

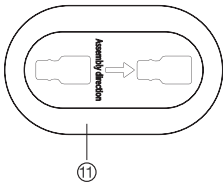
Blue LED blinking when pairing with WiFi;
Turn off when WiFi paired;
Blink once when motion detected.

Charging indicator tips:

Solid red when charging, and off when fully charged.



Bottom side of router



7

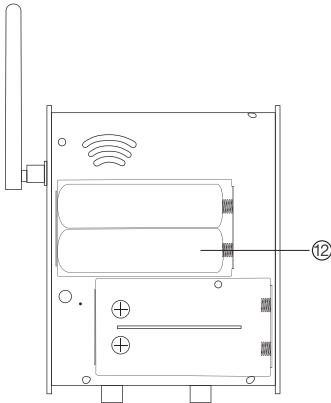
TIPS: Please match the two arrows' direction to assemble the device.

8

Quick guide of Wi-Fi camera function:

- 1.Download & Install Free App <CamSC> from App Store or Google Play;
Tips: Please allow "CamSC" to notification, Bluetooth and location while using the App.
 - 2.Enter App, select your region at the top right corner and register;
Tips: If a code doesn't arrive, please check the spam folder first.
 3. Open the side cover by slide off the bottom bracket-->Insert micro SD card --> Turn on top ON/OFF switch, press reset key 4 seconds till a beep sound (Pairing mode is ready now).
 4. Enter App, Click + >> Smart Home >> Pairing Mode >> Click device name >> Select Wi-Fi >> Input password > NEXT.
 5. Device online in around 10 seconds & Wi-Fi live video is ready.
- P.S.: Contact local dealer for tutorial video setting up.

1



⑫ 2 x Batteries inside device (Default)

5

Wi-Fi Camera Connection Setting

Step1: CamSC APP

1. Scan below QR code or search and download free APP named <CamSC> in Apple APP store, Google play or Electronic market, and install it;



APP:CamSC

9

Overview:

The Ultra Long Standby WiFi Security Camera, it is built with high tech of super low power consumption 450μA/hour to save energy for around 1 year (Optional: 2 years) standby after being fully charged.

First, it can be used for watching live streaming video day and night (night vision around 5 meters), or taking photo and video by APP in smart-phone remotely after WiFi connected;

Second, its PIR sensor will make precisely motion detect recording for surveillance use (around 5 meters distance and 2 meters height) . Also, it has cycle recording and work when charging.

Usages: Nanny camera, Home/ Shop/ Office/ Warehouse surveillance camera.....

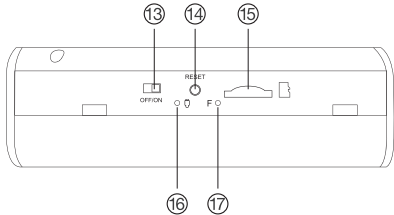
Warning : " illegal use is not allowed! Or, there will be consequences to bear! "

In the box:

- 1 x Camera Unit
- 1 x Micro SD Card Reader
- 1 x USB Cable
- 1 x User Manual
- 2 x Batteries Inside Device (Default)

2

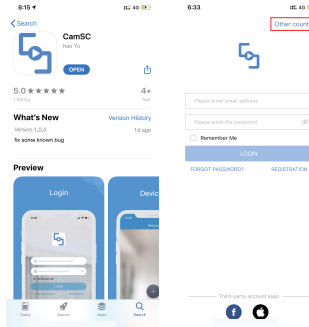
Top side of router (Side cover opened)



- ⑬ ON/OFF switch
- ⑭ Reset key
- ⑮ Micro SD card slot
- ⑯ Charging indicator
- ⑰ WiFi indicator

6

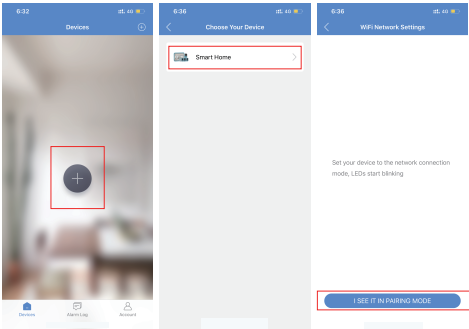
2. Open APP CamSC, select current region at the top right corner. Register with email, or third-party account like Facebook or IOS account. (Tips: If a code doesn't arrive, please check the spam folder first.)



Step 2: Take off back cover --> Insert micro SD card --> Turn back ON/OFF switch (WiFi indicator is solid blue.);

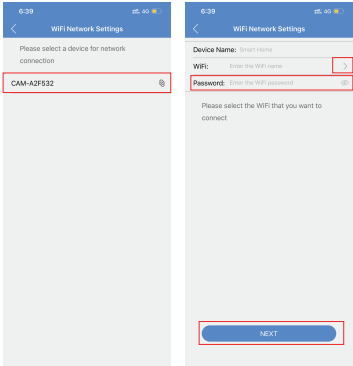
10

Step 3:Connect WiFi
1. Press Reset key 4 seconds till a beep sound(WiFi indicator blink slowly and ready for pairing WiFi);
2. Open APP CamSC >> Click + >> Smart Home >> Device in pairing mode >> CAM-xxxxxx.



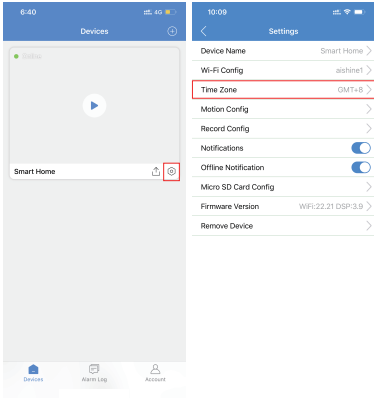
11

3. Click > at the end of WiFi to select the local router WiFi, then input password.
Click NEXT and wait around 10 seconds to finish the configuring; Device Binding Successful and online now.



12

4. Click ⚙ in APP'S first interface, select Time Zone and choose Time Zone to ensure live streaming video with the set time zone.



13

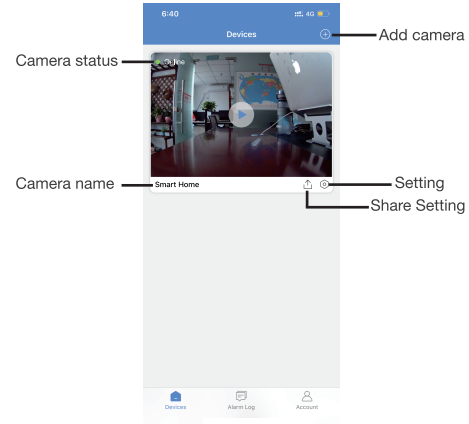
Camera Normal Status:
1. Camera always in standby mode;
2. Once motion detected, it will push a notification to phone, do a snapshot and record a 15 seconds video clip into memory card;
3. Sleep and alert after 1 minute once motion detected again.

Set name: Press the ⚙ after the camera, select Device Name --> Input needed name like Office, Living room etc...

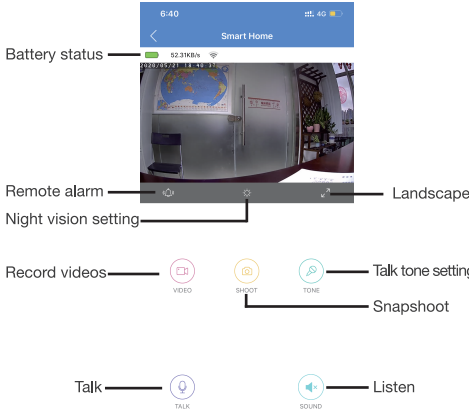


14

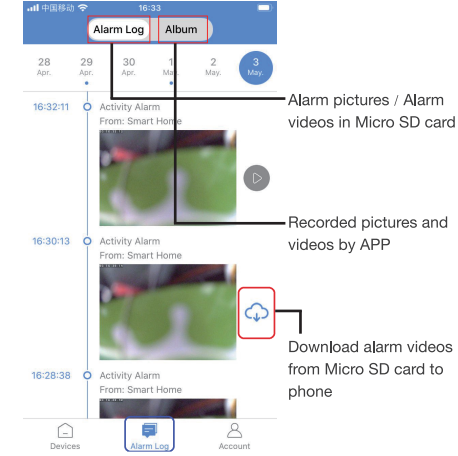
APP Introduction



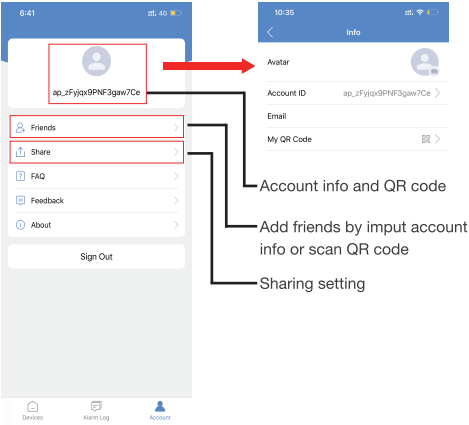
15



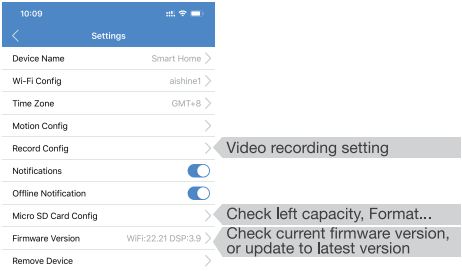
16



17



18



19

Specification

Resolution	2 Mega CMOS
Video pixel	1920*1080
Compressed format	H.264
View angle	145 Degree
Type of memory card	TF card>=Class 4/10 and HC marked
Maximum capacity of memory card	64GB
Mobile phone operation system	Android/iOS
Compatible router	2.4G and Mobile hotspot
Two way talking	Yes
PIR alarm pictures in server	15days
Battery capacity	2 x 2600mAh(Default) 4 x 2600mAh(Optional)
Standby power consumption	500μA
Power consumption	350mAh
Power consumption with night vision	610mAh
Recording	1 minute/ around 24MB
Standby time x 2 batteries	Around 1 year
Charging time x 2 batteries	Around 12 hours
Standby time x 4 batteries	Around two year
Charging time x 4 batteries	Around 24 hours
Power adapter (not include but needed)	5V / 2A

20

FAQ

- Is device with offline and low power notification?
Yes.
- What does the device do when WiFi off?
Keep searching WiFi signal 3mins, 10mins, 1hour, 2 hours, 5hours,24hours later; If WiFi on, it will be connected to WiFi automatically.
- If the steps in Page 12 can't move forward (Bluetooth Pairing Mode)?
Delete the App and Download again to test,and agree all permissions (Allow notification, Bluetooth and location).

21



The end!