

TIPS:

1. Press the Mode switch 3 seconds in any mode to disable the audio alarm sounds, indicator will flash 3 times.

2. Device Charging: When plug in power, battery indicator is always on and off when fully charged.

Battery Capacity: 950mA Charging Time: 3 hours

RF BUG DETECTOR for Wired/Wireless hidden cameras, GSM listening devices, GPS trackers.

User Manual(Mar,2021)

The RF Bug Detector is for personal privacy protection. The bug camera and GPS detector included help assist in sweeping the surveillance devices. Locate hidden cameras, listening devices or GPS trackers that could be invading your private space at home, the office or vehicle. It's portable and tiny for along carry in handbag, key chain, suitcase or briefcase.

Usage area:

Hotel

AirBnB

Apartment

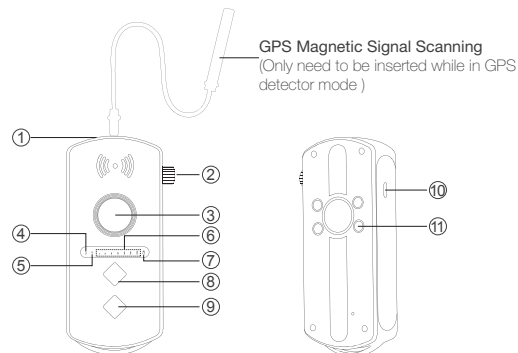
Dressing room

Public toilet

Gym

Cars

Product structure

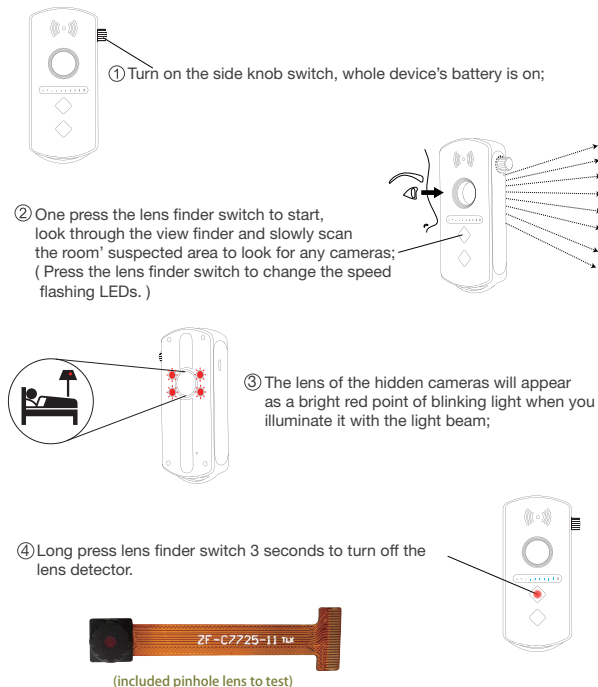


- ① GPS detector port ② Knob switch ③ View finder ④ GPS detector indicator
- ⑤ Wireless detector indicator ⑥ Frequency indicator ⑦ Battery indicator
- ⑧ Lens finder switch ⑨ Wireless/GPS detector mode switch ⑩ USB port
- ⑪ Infrared LEDs

In the box:

1 x RF bug detector	1 x User manual	1 x USB cable
1 x GPS magnetic signal scanning	1 x Test lens	

How to detect the hidden cameras? (Lens Detector)

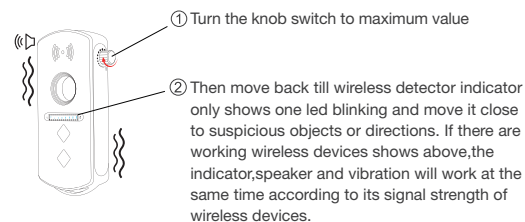


How to detect the wireless signals? (Wireless Signals Detector)

Wireless Signals detect



While the knob switch is ON, wireless Signals detect is auto ON.(The knob switch is also for adjusting wireless detector's sensitivity)



How to detect the GPS tracker? (GPS Detector)

