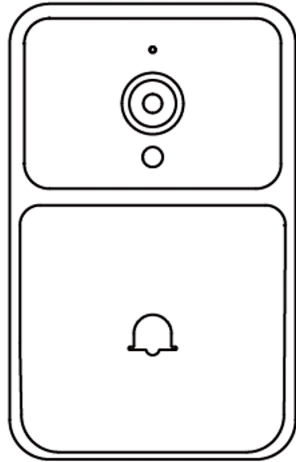
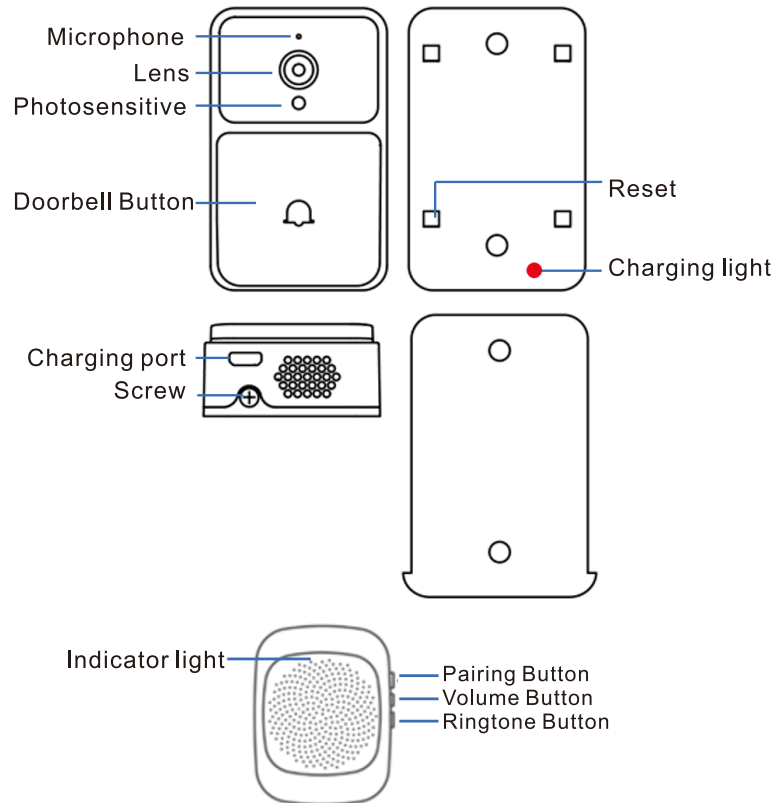


M7 Doorbell Manual



Overview

Doorbell:



Instruction:

1. Scan the QR code below to download



Android



IOS

2. Register and login in the APP

3. Click the “+” button in the APP to add device.
Please follow the instructions in the APP.

Notice:

Please open bluetooth and wireless LAN.

Please allow the APP to get authorities from your phone.

Do not support 5G WiFi.

Do not support WiFi with name containing Chinese characters.

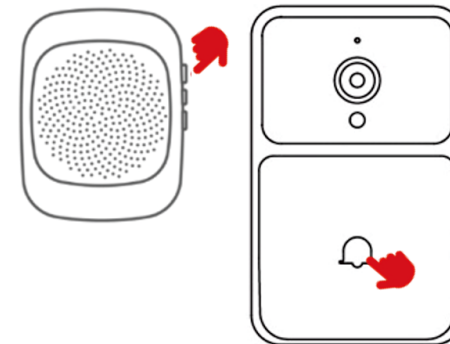
Please do not install the doorbell on metal.

Please use the doorbell and the chime within strong WiFi range.

Please test the doorbell and the chime before you install them.

Please tear off the lens-protection film after installation.

Pairing doorbell with chime



1. Inset the USB plug into appropriate power supply (5V 1A).

2. Press and hold on the pairing button of the chime for 2 seconds until the indicator light solid on.

3. Press the doorbell button of the doorbell, wait for pairing until the indicator light of the chime go out.

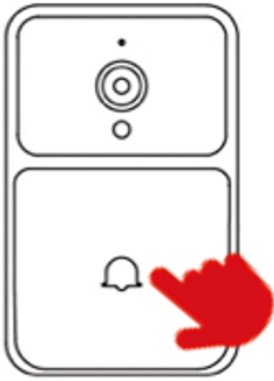
Notice:

1. Please put the doorbell close to the chime during pairing process.
2. Please ensure the doorbell is not out of power during pairing process.
3. The indicator light of the chime go out when pairing success.
4. If you don't do pairing step 3 after done pairing step 2, the chime's indicator light will go out as well after 10 seconds and the pairing will fail.
5. Please reset the doorbell and try again if pairing failed.

Reset & Restore to factory settings

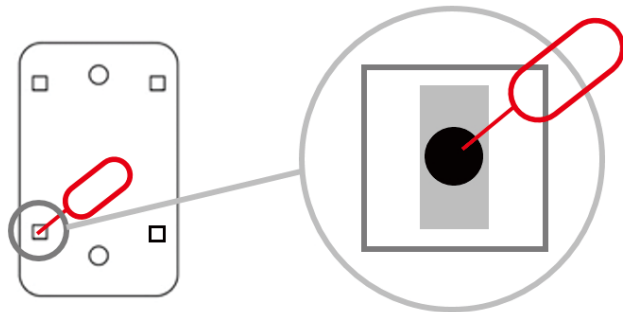
Reset:

Press and hold on the doorbell button until you hear the voice prompt.



Restore to factory settings:

Remove the back board that fixed with screws. Then use the screwdriver to press the little black reset button in the reset hole at the back of the doorbell. A gently tap on the button will do the work.



Functions:

Real-time video call:

When visitor pressing your doorbell, your phone will receive a notification from the APP. You have to bind the doorbell with your account in the APP on your phone.

Sharing doorbell:

Share video call and doorbell answering with your families or friends in the APP. To get sharing, your families or friends need their own account in the APP.

Charging:

When the doorbell battery is low, the phone which bind with the doorbell will receive a low battery notification from the APP. To charge the doorbell, please remove the doorbell from the installed back board with the screwdriver. Then charge the doorbell with the USB cable (5V 1A). The charging light of the doorbell will be solid on when charging, the light will go out when fully charged.