

App Download



Android

Turn on the device:

1. If the power is plugged in, it is not necessary to press the power button for a long time. If the blue light is on, the device is turned on. The red light is a charging lamp
2. Press and hold for 3 seconds to start the machine. If the blue light is on, it means that the device has been started, and the red light is the charging light
3. Turn on GPS positioning of mobile phone before using idvcam app, and close data when using AP

Connect AP

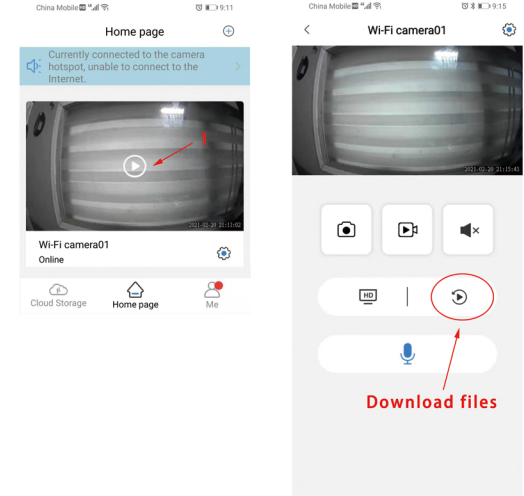


Open the kucamera app

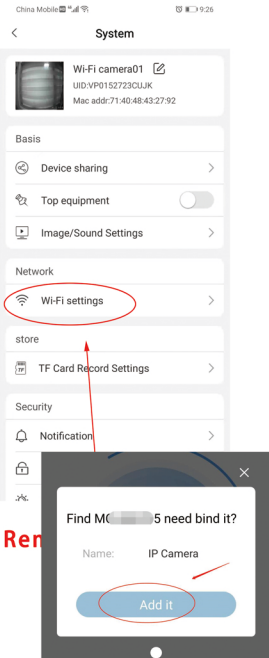
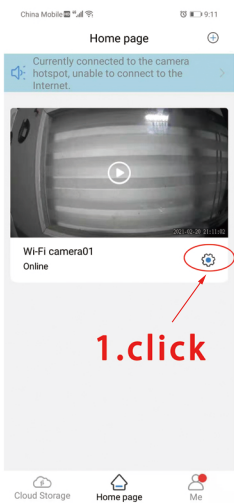
Registration required for first use



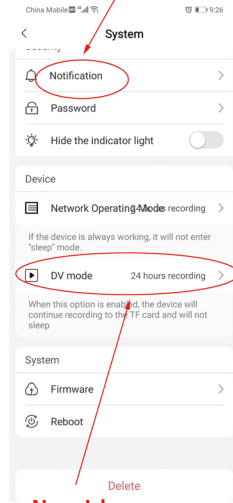
Download files



set up



Turn on infrared at a fixed time



- No video
- 24-hour video
- regular video
- motion detection
- video

Infrared lamp

